

## Unconfirmed Minutes

### A. Attendance

<u>Title</u>	<u>Name</u>	<u>Proxy</u>	<u>Attendee</u>
President:	Sasha Braybrooke		Present ▾
Secretary:	Felix Hughes		Present ▾
Treasurer:	Campbell Frost	Alessandro Papaleo	Proxy ▾
EdAc:	Paul Halliday	Naomi Drego	Present ▾
EdPub:	Madeline Curkovic		Present ▾
Activities:	Fatima Iqbal	Lana Abdelhalim	Proxy ▾
CLA:	Anban Raj		Absent ▾
Welfare:	Mohamed Orabi		Present ▾
Indigenous:	John Sopar	Mya Young	Proxy ▾
ESJ:	Remus Brasier		Present ▾
Women's:	Eloise Driver	Frances Clark	Present ▾
Queer:	Eden Rosen		Present ▾
Disabilities & Carers:	Charlotte Sutton		Present ▾
People of Colour:	Mahathir Lutfullah		Present ▾
Residential Community:	Rafiad Ruhi	Leroy Van Schellebeck	Present ▾
MUISS:	Bryan Law		Apology ▾
MAPS:	Vacant		Vacant ▾
Clubs & Societies:	Jay Davis		Present ▾
Radio Monash:	Georgie McColm		Present ▾
General Representative:	Tayla Husband		Present ▾
General Representative:	Diyara Jaswar		Present ▾
General Representative:	Beck Riches		Present ▾
General Representative:	Jennifer Tran		Present ▾
General Representative:	Nick Fallaw		Present ▾

Meeting opened at 11:26am

Observers:

Josh Chauh, Angus Duske, Sophie Allen, Max Tory, Khoa Tran, Rofida Arnaout.

### B. Acknowledgment of Traditional Owners of Land

This MSC acknowledges and pays respect to the Bunurong peoples of the Kulin nations as the original and ongoing owners and custodians of this land. The MSA commits itself to actively fight alongside Indigenous peoples for reconciliation and justice for all Indigenous Australians.

### C. Confirmation of Agenda Order

Confirmed

#### Procedural motion:

This MSC hears agenda items J, K, L, M and N through formal debate.

**Moved:** Jay Davis

**In Favour:** 16

**Against:** 0

**MOTION CARRIED**

### D. Confirmation of Previous Minutes

N/A

### E. Reports

Office Bearer and Divisional Reports	Submission Compliance
President	Report Submitted on time
Secretary	Report Submitted on time
Treasurer	<b>No Submission Received</b>
Creative and Live Arts	Report Submitted on time
Activities	Report Submitted on time
Clubs & Societies	Report Submitted on time
MUISS	Report Submitted on time

MAPS (MSCs 1 & 3)	No Submission Received
Reports	Report Submitted on time

**Motion #1:**

This MSC accepts all submitted Office Bearer and Divisional Reports en bloc.

**Moved:** Felix Hughes

**Seconded:** Jay Davis

**In Favour:** 18

**Against:** 0

**Abstentions:** 0

**MOTION CARRIED**

**F. Leave Request**

**Motion #2:**

This MSC grants Diyara Jaswar prior leave effective from 18 March 2025 until 17 April 2025.

**Moved:** Felix Hughes

**Seconded:** Jennifer Tran

**In Favour:**

**Against:**

**Abstentions:**

**MOTION WITHDRAWN**

**G. Election of Executive Members**

**Motion #3:**

This MSC opens nominations for the election of MSA Executive General Representative for 2025, pursuant to s24.1(e) of the MSA Constitution.

**Moved:** Felix Hughes

**Seconded:** Jay Davis

**In Favour:** 17

**Against:** 0

**Abstentions:** 3

**MOTION CARRIED**

Charlotte Sutton sought clarification about the recent General Representative appointment and asked how the process operated under the election regulations.

Felix Hughes outlined the procedure for filling proportional vacancies, explaining the Schedule 1.2 mechanism and the role of authorised officers under the election regulations.

Naomi Drego expressed interest in improving transparency around future appointments.

Alessandro Papaleo referred to similar matters discussed last year as context for the conversation.

Sasha Braybrooke called for nominations to the position of Executive General Representative.

Tayla Husband nominated herself as Executive General Representative. Nick Fallaw seconded the nomination.

With only one nomination received, Sasha declared Tayla Husband to be elected Executive General Representative unopposed.

## H. 2024 Financial Statements

### **Motion #4:**

This MSC moves to accept the MSA Financial Statement Summaries for–

1. [March 2024](#); and
2. [May 2024](#); and
3. [August 2024](#); and
4. [September 2024](#); and
5. [October 2024](#); and
6. [November 2024](#),

as detailed in the Appendix.

**Moved:** Jay Davis      **Seconded:** Felix Hughes

**In Favour:** 16

**Against:** 0

**Abstentions:** 0

**MOTION CARRIED**

Jay Davis it had been almost a year since the first 2024 statements were due and described the delay as unreasonable, attributing it to the 2024 Treasurer's incompetence.

Charlotte Sutton responded that she is sure there is a reason why the financial statement summaries are only just being dealt with now.

Naomi Drengo agreed, commending the work undertaken in 2024.

Alessandro Papaleo added that similar administrative backlogs had been discussed last year.

### **I. The MSA endorses the 5 April rally against Trump**

#### Preamble:

Since Trump's election he has launched attacks on women, trans people, migrants, refugees and every layer of the oppressed. Trans peoples' passports have been reissued with changed gender identifiers, the 1965 executive order that mandated non-discriminatory hiring practices in the federal government has been overturned, and entire states' public schooling funding has been threatened if they don't get rid of DEI programs.

In Australia we have also seen the growing emboldening of the far right. Since the loss of the Indigenous Voice to parliament, states have withdrawn from Treaty processes, bail laws have been tightened as part of racist "tough on crime" measures and in Queensland the LNP government has withdrawn prescriptions of puberty blockers for those under the age of 18 as part of an attack on the rights on trans people.

In the face of this we have seen the beginnings of a push back against Trump and the Republicans' agenda. There have been protests that blocked highways in Los Angeles and there were 300 protests across America on International Women's Day. The Campaign Against Racism and Fascism (CARF) has called a rally "Stop Trump - Fight the Right" for 5 April. CARF is the group that organised the rally against the notorious transphobe Posie Parker as well as the successful campaign against the Nazi gym in Sunshine. The rally is to gather left-wing people who oppose Trump and his impacts on the wider Australian political climate.

#### **Motion #5:**

1. This MSC **politically** endorses the 5 April “Stop Trump - Fight the Right” rally called by the Campaign Against Racism and Fascism
2. **Encourages students to attend the rally**

**Moved:** Madeline Curkovic

**Seconded:** Beck Riches

**In Favour:** 8

**Against:** 12

**Abstentions:** 1

**MOTION FAILED**

**Amendment to Motion #5:**

1. To add “politically” in front of “endorses” in point 1.
2. To add action point 2
  2. “Encourages students to attend the rally”

**Moved:** Madeline Curkovic

**Seconded:** Beck Riches

**AMENDMENT ACCEPTED BY MOVERS**

Madeline Curkovic argued that Trump’s return to office signalled a global shift to the far right, influencing Australian politics and policies, and said student unions should take an active stance against the far right.

Beck Riches said rising militarisation, authoritarianism and restrictions on academic work under US influence strengthened the need for clear left-wing opposition.

Felix Hughes questioned planned safety processes at the relay, and the direct link between the motion and students.

Max Tory spoke for the motion, emphasising the need for visible opposition to the rise of far-right politics and arguing that student unions have a role in supporting public demonstrations against these broader political shifts.

Naomi discussed perhaps MSC could make an amendment that goes to the political intent of the motion without endorsing this rally.

Frances Clark opposed the motion on the basis that the preamble did not demonstrate a clear connection to student issues.

Charlotte Sutton inquired whether accessibility and safety considerations would be clearly communicated to students.

## J. The Major Parties Have Failed Students

### Preamble:

As we near the next federal election, the Australian Labor Party has been in power federally for nearly 3 years. They have decisively failed to address the issues affecting students.

Two thirds of students live below the poverty line.<sup>1</sup> One in seven domestic students say they regularly go without food or other necessities because they can't afford them. In a worsening cost of living crisis, this is unsurprising. Access to cheap housing is increasingly scarce and wages and youth allowance aren't keeping up with the price of essential goods. Students deserve better. Students receive less government support today than any other time since the expansion of universities in the 1950s<sup>2</sup>, while those lucky enough to be granted access to youth allowance receive \$390 per week below the poverty line.<sup>3</sup> Both the ALP and the Liberals have consistently refused to raise welfare payments and commit to keeping students locked into poverty.

The MSA stands for free education. Higher education massively boosts the productivity and profitability of business, and expecting students to foot the bill for this amounts to a regressive tax on the working class to increase the profitability of Australian capitalism. Undergraduate university degrees often cost Australian students upwards of \$50,000, not to mention the exorbitant fees charged to international students.<sup>4</sup> On top of this, students in nursing, teaching and similar degrees provide hundreds of hours of placement either for free or for drastically insufficient compensation, well below minimum wage. Both Liberal and Labor's approaches to higher education have increased the costs of university degrees and continue the decline in quality of education. Staff are hired on an insecure and casual basis, students have less one-on-one time with their tutors and student to staff ratios are increasing. The government should intervene to secure the rights of staff, quality education for students and make tertiary education free.

Military spending increased to a record \$55.7 billion in this year's budget, and Defence minister Richard Marles has promised to raise it by a further \$50 billion over the next

---

<sup>1</sup> <https://gupsa.org.au/two-thirds-of-university-students-living-below-the-poverty-line-report/>

<sup>2</sup> [https://marxistleftreview.org/articles/the-neoliberal-transformation-of-higher-education/#\\_edn61](https://marxistleftreview.org/articles/the-neoliberal-transformation-of-higher-education/#_edn61)

<sup>3</sup>

<https://povertyandinequality.acoss.org.au/poverty/new-report-highlights-depth-of-poverty-for-people-on-income-support/>

<sup>4</sup> <https://www.uac.edu.au/future-applicants/fees/university-course-costs>

decade.<sup>5</sup> <sup>6</sup> Labor removed the low-income tax offset and introduced the stage three tax cuts forecast to cost \$100 billion over four years, disproportionately benefitting high-income earners. \$50 billion is given away every year in the form of capital gains tax discounts and negative gearing concessions.<sup>7</sup> Another \$14.5 billion went in subsidies to the fossil fuel industry last year.<sup>8</sup> The Labor government has just recently approved four huge coal mine expansions which will emit 850m tonnes of carbon emissions in their lifetime, almost double Australia's annual emissions.<sup>9</sup> The government has the money to fix the problems of students, but instead, they choose to spend it on gearing up for war, destroying the planet and securing profits for the rich. The immense wealth of the Australian government could be used to solve student poverty, address the housing crisis and provide free education. It would only cost \$69 billion to provide free education over the next decade.<sup>10</sup>

In the context of growing military tensions, a catastrophic cost-of-living crisis and worsening inequality, and the rise of far-right politics, we need better than Labor and the Liberals. There are immediate solutions which could address the crises facing students, workers, and the oppressed, yet the major parties in Australian politics insist on prioritising the interests of the rich, fossil fuel companies, and imperialist competition. This is not good enough. As the peak representative body of Monash students, the MSC must demand better.

#### Motion #6:

This MSC:

1. Acknowledges that both Labor and Liberal governments have failed to address the needs of students as relates to education, the cost-of-living, **and** climate change,~~and militarism.~~
2. Calls for free education, raising youth allowance payments above the poverty line, significantly expanding public housing, immediately transitioning to renewables,~~and cuts to~~

<sup>5</sup>

[https://www.apf.gov.au/About\\_Parliament/Parliamentary\\_departments/Parliamentary\\_Library/Budget\\_reviews/2024-25/Defence#:~:text=In%202024%E2%80%9325%20Defence%20](https://www.apf.gov.au/About_Parliament/Parliamentary_departments/Parliamentary_Library/Budget_reviews/2024-25/Defence#:~:text=In%202024%E2%80%9325%20Defence%20)

<sup>6</sup>

[https://www.abc.net.au/news/2024-04-17/richard-marles-unveils-50b-defence-spending-increase/103734300?fbclid=IwZXh0bgNhZW0CMTEAAR13Qd9ITkybBv9xNZHv7M\\_Z14HVv1v7Glg5Fo6QKv51XTXUp5MAhsQ4HmQ\\_aem\\_xRIG3abBJQzYWqQm5jmiJw](https://www.abc.net.au/news/2024-04-17/richard-marles-unveils-50b-defence-spending-increase/103734300?fbclid=IwZXh0bgNhZW0CMTEAAR13Qd9ITkybBv9xNZHv7M_Z14HVv1v7Glg5Fo6QKv51XTXUp5MAhsQ4HmQ_aem_xRIG3abBJQzYWqQm5jmiJw)

<sup>7</sup>

<https://www.abc.net.au/news/2023-02-28/superannuation-concessions-housing-property-tax-breaks-treasury/102032674>

<sup>8</sup> <https://australiainstitute.org.au/post/fossil-fuel-subsidies-hit-14-5-billion-in-2023-24-up-31/>

<sup>9</sup>

<https://envirojustice.org.au/press-release/albanese-government-approves-three-more-massive-coal-mine-expansions/>

<sup>10</sup>

<https://www.theguardian.com/australia-news/2023/jun/21/university-of-melbourne-vice-chancellor-calls-for-free-university-education>

~~military spending~~ to put more funding into improving society for workers, students and the oppressed.

~~3. Will publish a statement publicising the demands in point (2) to represent the needs of students in the federal election.~~

**Moved:** Beck Riches

**Seconded:** Madeline Curkovic

**In Favour:** 17

**Against:** 0

**Abstentions:** 2

**MOTION CARRIED**

**Amendment to motion 6:**

1. Strike "Both the ALP and the Liberals Governments across Australia" and replace with "Governments across Australia"
2. Strike Both Liberal and Labor's
3. Strike "e" replace with "s"
4. Add "d" on "continue"
5. Strike "we need better than Labor and the Liberals" and replace with students need better.
6. Add "and" between cost-of-living and climate change and strike "militarism"
7. Strike "and cuts to military spending"
8. Strike "3. Will publish a statement publicising the demands in point (2) to represent the needs of students in the federal election."
9. Strike  
"<https://gupsa.org.au/two-thirds-of-university-students-living-below-the-poverty-line-report/>" and  
"[https://marxistleftreview.org/articles/the-neoliberal-transformation-of-higher-education/#\\_edn61](https://marxistleftreview.org/articles/the-neoliberal-transformation-of-higher-education/#_edn61)"

**Moved:** Felix Hughes

**Seconded:** Jay Davis

**In favour:** 11

**Against:** 4

**Abstaining:** 2

**AMENDMENT CARRIED**

Beck Riches argued that the government has ample resources to improve conditions for students but chooses to prioritise military spending, subsidies for fossil fuel companies and concessions for the wealthy. She said the MSC should be clear about demanding free education and higher income support.

Max Tory supported the motion, highlighting stagnant wages, unaffordable rents and the lack of rent caps, arguing these failures directly worsen students' lives. He stated governments have prioritised developers and profits over students' basic needs.

Felix Hughes moved an amendment and argued motions should centre students rather than political parties. He said consecutive governments across Australia have contributed to current student hardship, and amendments would focus the motion more squarely on student needs.

Jay Davis stated the amendment would make the motion more relevant by removing outdated references and sources and clarifying that the motion should address issues affecting students.

Madeline Curkovic spoke against the amendment, arguing the motion already demonstrated how militarism and government decisions materially affect students.

Max Tory argued that removing references to major parties diluted accountability, and that the Labor and Liberal parties should be directly identified as responsible for policies harming students.

## **K. The quality of our education is deteriorating. It's time to turn it around**

### Preamble:

Last year, Monash told Arts tutors to prepare for tutorial sizes upwards of 90 people. This year, students are reporting larger than normal class sizes. The MSA Education Department has been running a survey to investigate the impact these changes are having on students and staff, and to prepare for a campaign to fight for smaller class sizes that prioritise our education, and staff workloads.

One student reported that their Foundations of Genetics unit (GEN2041) class only had three TAs staffing a class of approximately 70 students. Consequently, students spend massive amounts of tutorial time waiting for help with group work. Another student told us that their criminology classes (ATS3004, ATS3161) have doubled in size, leading to similar

problems with table discussions with the tutor taking about 45 minutes to go around the room.

This follows on from a similar trajectory of ballooning tutorial sizes over recent years at Monash. In a bargaining update dated 26 February 2024, the Monash NTEU branch noted that tutorial sizes were previously capped at 25, but that in practice this has been abolished, with tutorials exceeding 30 students.

It is worth comparing this decline to other comparable institutions. University of Melbourne researcher Peter Woelert notes that in 2011, average University of Melbourne tutorial sizes were approximately 20 students. Research from the UK shows that median class sizes in History tend to range from 6-15 and 16-25 students per class.

The current situation is unacceptable. Not only has this overloaded our tutors with work without any increase in pay for this extra workload, it has also deteriorated the quality of our education and limits students' ability to engage with teaching staff. We are calling for an enforced standard of 1:16 teachers to students in every tutorial and workshop. Monash University is charging the same fees while lowering the quality of students' education, and prioritising the profits of the university over our learning.

As the peak representative body for students at Monash university, we have a responsibility to stand up for students' right to a decent and indeed, free, education as one of our core principles.

<https://findanexpert.unimelb.edu.au/news/33824-why-australian-uni-students-have-a-right-to-know-class-sizes-before-they-sign-up>

[https://www.nteu.au/News\\_Articles/Local\\_News/VIC/Monash/Bargaining\\_update\\_26\\_2\\_2024.aspx](https://www.nteu.au/News_Articles/Local_News/VIC/Monash/Bargaining_update_26_2_2024.aspx)

**Motion #7:**

1. This MSC supports the MSA Education Department's campaign to fight for smaller class sizes with an enforced ratio of 1:16 staff to students, and for teaching staff to be paid for all hours worked in line with NTEU demands
2. This MSC believes that Monash's practices regarding class sizes are incompatible with students' ability to access high quality education, and instead prioritise the profits of the university.

<b>Moved:</b> Madeline Curkovic	<b>Seconded:</b> <del>Beck Riches</del> Naomi
<b>In Favour:</b> 19	
<b>Against:</b> 0	
<b>Abstentions:</b> 0	
<b>MOTION CARRIED</b>	

Madeline Curkovic outlined reports of rapidly increasing class sizes across multiple faculties, inadequate staffing, last-minute hiring of tutors, and declining teaching quality. She said the Education Department and the NTEU were preparing a joint campaign for smaller classes and proper staffing levels.

Naomi Drego supported the motion, saying students were directly affected by overcrowded tutorials and unclear or rushed unit preparation, and emphasised the need for the MSA to advocate for these students.

Paul Halliday described tutorial shortages and administrative disarray in the Faculty of Education, noting that unit staff were forced to prioritise emergency staffing over delivering clear assessments or consistent course materials.

Remus Brasier said oversized classes were becoming normalised and that tutors were unable to facilitate meaningful discussion, calling it a university-wide trend driven by the prioritisation of revenue over teaching quality.

Leroy Van Schellebeck linked class size problems to broader cuts and staffing issues occurring across faculties, saying the changes had a significant negative impact on the student experience.

Felix Hughes agreed with previous speakers, noting that the issue affected both students and staff and required coordinated action from the Education Department and the wider MSA.

Beck Riches shared concerns about tutors receiving contracts only days before teaching began, arguing that rushed preparation and understaffing reflected a broader shift toward running the university like a business rather than a public education institution.

Eden Rosen described experiencing a 90-person tutorial and highlighted the barriers this created for disabled students, including the difficulty of accessing suitable class times even with DSS support.

**Jay re-entered the room at 12:37pm.**

## L. Defend Free Speech on our Campuses

### Preamble:

Across Australia, we are seeing the introduction of concerning restrictions on freedom of speech and academic speech on our university campuses, specifically in relation to the question of Palestine. Recently, Universities Australia recommended a new definition of anti-semitism that poses a serious risk to legitimate political speech.

This new definition has the potential to falsely define legitimate criticism of Israel—for example, the belief that Israel should be replaced by a single state in which Jewish and Muslim people have equal rights—as anti-semitic. The definition draws an equivalence between Judaism and Zionism that is reductive, false, and designed to restrict speech and political activity in support of the people of Palestine.

The definition has already drawn heavy criticism from academics, unionists, human rights NGOs, and anti-racist activists. The Jewish Council of Australia described the definition in the following terms: “a dangerous and politicised definition of antisemitism which threatens academic freedom, will have a chilling effect on legitimate criticism of Israel, and risks institutionalising anti-Palestinian racism.”

Student unions oppose any effort to censor legitimate anti-racist support for Palestine. As part of the effort to defend freedom of speech on university campuses, the National Union of Students is participating in and endorsing the People’s Inquiry into Campus Free Speech on Palestine, a grassroots-led initiative bringing together academics, students, legal experts, and NGOs to investigate the state of free speech on our campuses in relation to Palestine.

The MSA will support this initiative by preparing a submission to the People’s Inquiry and encouraging students and staff at our campus to participate as well.

### **Motion #8:**

1. The MSA endorses the People’s Inquiry into Campus Free Speech on Palestine.
2. Directs the President, in conjunction with relevant office-bearers, to prepare a submission to the People’s Inquiry on behalf of the MSA.
3. The President of the MSA will write to the Vice-Chancellors of Monash expressing the MSA’s opposition to the new definition.

<b>Moved:</b> Lana Abdelhalim	<b>Seconded:</b> Mohamed Orabi
<b>In Favour:</b> 20	
<b>Against:</b> 0	
<b>Abstentions:</b> 0	
<b>MOTION CARRIED</b>	

Lana Abdelhalim spoke in favour of the motion, arguing that recent national moves to tighten definitions around discriminatory speech were already leading to restrictions on student expression and academic work. She said students had raised concerns about being warned off certain topics in classes and assessments, and that unclear interpretations of new guidelines created a chilling effect on political speech and campus activism.

Mohamed Orabi supported the motion, noting that similar issues had emerged at universities for several years and that sustained pressure was needed to prevent restrictive policies from being normalised. He emphasised the importance of the MSA continuing to communicate its position to university leadership.

Eden Rosen spoke in favour and noted that freedom of expression on campus must be protected consistently, and that limiting discussion in one area risks undermining free speech more broadly for all students.

Madeline Curkovic argued that restrictions on political expression often expand once established, and highlighted the importance of the MSA making a submission to the national inquiry so student perspectives are formally represented.

Max Tory described recent disciplinary actions at other universities as examples of how definitions can be misapplied to target student activism, saying the inquiry was an important opportunity to push back against that trend.

Sasha Braybrooke passed the chair to Jay Davis.

## M. Student Code of Conduct

### Preamble:

Monash introduced a new *Student Code of Conduct* and *Principles for Creating Safer Classrooms*, which came into effect on February 24 2025.

These policies pose significant risks to students freedom of speech, protest rights, and ability to fully participate in university life.

This policy also impacts both students and staff. It restricts students from discussing "non-unit" content in class and limiting their right to protest on campus suppresses open dialogue, critical thinking, and student activism. Students will face increased pressure to self-censor, navigate unclear restrictions, and limit their advocacy efforts.

Staff will also bear the additional responsibility of monitoring and censoring student discussions, as well as ensuring that non-unit-related content is removed from their classrooms. This extra workload is not reflected in any adjustments to pay, raising serious concerns.

**Motion #9:**

This MSC:

1. Condemns Monash University in failing to conduct appropriate consultation with students for the new *Student Code of Conduct* and the *Principles for Creating Safer Classrooms* policy.
2. Opposes the introduction of policies which threaten the right to freedom of speech on campus.
3. Supports collaborating with the NTEU and other MSOs to draft a statement regarding this new policy.
4. Commits the MSA to campaign to the University on changing this policy.
5. Supports consulting with other MSOs and the NTEU to establish a framework to combat the new Code of Conduct and Safer Classrooms Initiative.

**Moved:** Sasha Braybrooke

**Seconded:** Nick Fallaw

**In Favour:** 19

**Against:** 0

**Abstentions:** 0

**MOTION CARRIED**

Sasha Braybrooke said the new Code and Safer Classrooms principles were introduced without consultation and are vague and restrictive, enabling the University to suppress political activity and requiring staff to remove non-unit material from classrooms.

Nick Fallaw argued the policy contradicts Monash's messaging about critical thinking, imposes unreasonable enforcement duties on staff and limits ordinary student activities.

Madeline Curkovic said similar policies elsewhere show this affects all students, not only Palestine activists, and warned it could improperly restrict NTEU material.

Charlotte Sutton highlighted the reputational clause, arguing it would hinder essential advocacy on disability issues.

Beck Riches described the policy as draconian for turning staff into speech enforcers and discouraging political engagement on campus.

Max Tory warned that framing restrictions as “safety” is increasingly used to justify limiting legitimate speech.

Eden Rosen said staff would no longer be able to discuss union matters in class, harming student–staff solidarity.

Angus Duske said the policy would effectively censor published material and compared it to banning criticism of government.

Jay Davis passed the chair to Sasha Braybrooke.

## **N. MRS fails to uphold quality of services for Residents**

### Preamble:

In 2024, each Residential Hall was overseen by a College Head and supported by three live-in staff responsible for primary care, operations, and leadership. In 2025, this structure has been dismantled. Instead, nine permanent staff are now shared across all halls, replacing the previous live-in roles. As a result, the responsibilities of event planning, resident care, and frontline support have shifted to Residential Advisors (RA’s), significantly increasing their workload without adequate support.

The MSA acknowledges and commends the dedication of RA’s and ResLife staff during Res O-Week in ensuring a smooth transition for new and returning residents.

However, the current staffing model raises serious concerns about its sustainability. The understaffing, lack of training, and insufficient support compromise both resident and staff wellbeing. RA’s have now become the primary point of contact in emergencies, yet the training provided by Monash Residential Services (MRS) remains inadequate - particularly in critical areas such as mental health and Sexual Assault and Sexual Harrasment (SASH) response. This leaves both residents and RA’s vulnerable and unprotected.

### **Motion #10:**

1. The MSA calls for MRS to increase ResLife staffing to ensure at least one dedicated staff member per Residential Hall.
2. The MSA calls for MRS to provide fair compensation for RAs in recognition of their expanded duties.
3. The MSA calls for MRS to enhance training and support for RAs to reflect their increased responsibilities.

**Moved:** Leroy Van Schellebeck

**Seconded:** Remus Brasier

**In Favour:** 17

**Against:** 0

**Abstentions:** 0

**MOTION CARRIED**

Leroy Van Schellebeck said the removal of live-in Residential Life roles had left a small number of overstretched staff and shifted major duties onto RAs, creating an unsustainable model and leading to increasing reports of serious issues.

Remus Brasier argued the changes were part of Monash's broader cost-cutting agenda, leaving vulnerable residents dependent on undertrained RAs while the University avoided responsibility for declining support.

Max Tory linked the problem to wider cuts and rising accommodation fees, suggesting Monash was extracting substantial revenue from residents while refusing to fund adequate staffing.

Frances Clark highlighted high rates of sexual assault in student accommodation and stressed that RAs lack proper training to respond safely and confidentially to disclosures.

Charlotte Sutton said removing College Heads had left students without trusted support, compromising safety for those with medical conditions, and noted that RA mental-health training had been cut despite their expanded responsibilities.

## **O. General Business**

Sophie Allen outlined plans for Lot's Wife to publish a counter faculty handbook.

Remus Brasier members to attend the Stop Woodside Monash background meeting later that afternoon.

## **P. Next Meeting**

*Time: 11:00am  
Date: 19/3/2025*

*Location: Conference Room Floor 1, Campus  
Centre, Clayton & Zoom (Hybrid)  
Page 17 of 18*

Meeting 4/25 of MSC will be held on 16/4/2025 at 11:00am in the Banquet Hall  
Floor 1, Campus Centre, Clayton.

**Q. Appendices**

**Meeting closed 1:20pm**

**FY24 SUMMARY**

	Actual	Budget	Variance	% Budget
Income	\$ 883,046	\$ 3,229,269	-\$ 2,346,223	27.35%
Expenditure	\$ 1,600,364	\$ 7,112,592	-\$ 5,512,228	22.50%
<b>Net Expenditure</b>	<b>\$ 717,318</b>	<b>\$ 3,883,323</b>	<b>\$ -</b>	<b>18.47%</b>
SSAF	\$ -	\$ 3,974,198	\$ 3,974,198	0.00%

Net Expenditure	\$	<b>717,318</b>
Budget	\$	3,883,323
<b>% Budget</b>		<b>18.47%</b>
% Expected		25.00%

**BUDGET VS. ACTUAL**

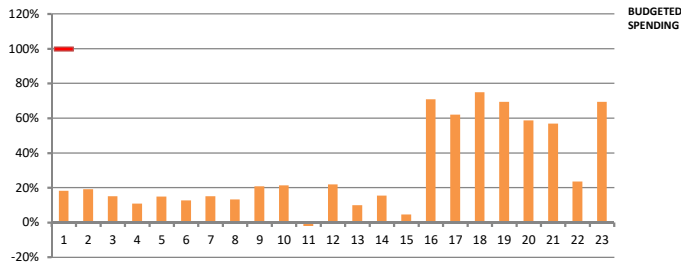


Figure 1. Percentage Variance By Department / Division

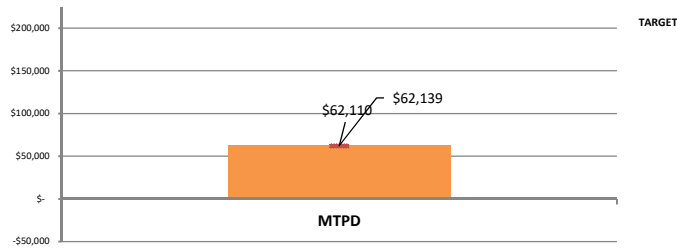


Figure 2. MSA Surplus Generating Department

**DEPARTMENTS & DIVISIONS**

1. Monash Student Council
2. Education Public
3. Education Academic
4. Women's
5. Welfare
6. Queer
7. Environment & Social Justice
8. Indigenous
9. Disabilities & Carers
10. People of Colour
11. Activities
12. Lot's Wife
13. Creative Live Arts
14. Residential Communities
15. The Bike Shop
16. Host Scheme & Volunteering
17. Student Advocacy & Support
18. MUST
19. Clubs & Societies
20. MAPS
21. MUISS
22. Radio Monash
23. SURLY

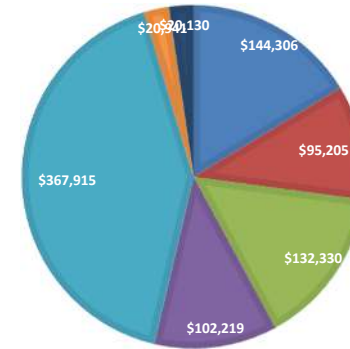
**MSA+ SALES**

	YTD	MONTH
<b>2023</b>	<b>8,533</b>	<b>1,153</b>
<b>2024</b>	<b>8,750</b>	<b>955</b>
2024 - G	456	40
2024 - S	8,294	915

**CAPITAL EXPENDITURE**

**MARCH 2024**      \$                      -  
No Capital Purchase for March

**INCOME**



**INCOME SOURCES**

- 1 Contributions & Investment
- 2 MSA Rewards
- 3 Advertising & Sponsorship
- 4 Sales
- 5 Course Revenue
- 6 Events Income
- 7 Other Income

Figure 3. Breakdown of Income Sources

**TOP 5 EVENTS\***

\*In 2024 data is incomplete as MSA Finance is not privy to non-ticketed attendance data.

MSC	WS:Taylor Swift	<b>446</b>
VOL	Monash Discover Melbourne: Queen Victoria Market	<b>216</b>
MSC	WS: Desi	<b>209</b>
VOL	Monash Discover Melbourne: Moomba	<b>208</b>
ResCom	Food Drop #1	<b>200</b>

**FINANCIAL ANALYSIS FOR THE MONTH**

MSA is performing on 19% of its budget compared to the expected 25%. The first 5 weeks of the Semester has been challenging for the MSA hospitality outlets. Efforts are made to minimise cost as well as to promote sales. Regular meeting to plan and strategise occurred to ensure the loss is kept at minimum.

MSA is expecting 75% of its SSAF funding in April. All the reporting will be submitted to the University in April. MSA also finalised its audit, with the audited financial statement presented to the MSC.

**INCOME STATEMENT**

1 January - 31 March 2024

	YEAR TO DATE			ANNUAL		
	2023 Actual (\$) (a)	2024 Actual (\$) (b)	Variance (\$) (c) = (b) - (a)	2024 Budget (\$) (d)	2023 Budget Variance (\$) (e) = (b) - (d)	2023 Budget (%) (f) = (b) / (d)
<b>INCOME</b>						
Contribution	-775	89,532	90,307	48,600	40,932	184%
Investment	48,242	54,774	6,532	225,000	-170,226	24%
MSA Rewards Sales	93,305	95,205	1,900	127,623	-32,418	75%
Advertising & Sponsorship	104,896	132,330	27,434	165,000	-32,670	80%
Sales	76,787	102,219	25,432	790,714	-688,495	13%
Courses Revenue	257,949	367,915	109,966	1,629,788	-1,261,873	23%
Fines & Charges	1,421	398	-1,023	24,850	-24,452	2%
Office Supplies	653	340	-313	1,050	-710	32%
Activities	450	0	-450	44,500	-44,500	0%
Functions & Productions	39,097	20,941	-18,156	109,500	-88,559	19%
Other Income	0	19,392	19,392	62,644	-43,252	31%
<b>TOTAL OPERATING INCOME</b>	<b>622,025</b>	<b>883,046</b>	<b>261,021</b>	<b>3,229,269</b>	<b>-2,346,223</b>	<b>27%</b>
<b>EXPENDITURE</b>						
Salaries & On Costs	977,468	997,088	19,620	4,772,746	-3,775,658	21%
Building & Maintenance	13,371	11,441	-1,930	32,801	-21,360	35%
Equipment	6,763	39,122	32,359	24,000	15,122	163%
Software Development & Licence	115,871	72,687	-43,184	220,275	-147,588	33%
Fees & Administrative Charges	20,985	26,881	5,896	251,647	-224,766	11%
Legal & Consultancy	19,113	10,626	-8,487	65,000	-54,374	16%
Office Expenses	25,151	23,996	-1,155	88,500	-64,504	27%
Subscriptions	6,349	4,475	-1,874	18,100	-13,625	25%
Training & Conference	10,028	9,685	-343	64,268	-54,583	15%
Grants & Donations	1,049	12,582	11,533	178,500	-165,918	7%
Projects & Campaigns	98,678	90,580	-8,098	311,426	-220,846	29%
Activities	95,904	113,177	17,273	253,834	-140,657	45%
Functions & Productions	27,556	70,630	43,074	246,800	-176,170	29%
Cost of Goods Sold	54,889	58,671	3,782	354,674	-296,003	17%
Other Expenses	77,292	58,723	-18,569	230,021	-171,298	26%
<b>TOTAL OPERATING EXPENSES</b>	<b>1,550,467</b>	<b>1,600,364</b>	<b>49,897</b>	<b>7,112,592</b>	<b>-5,512,228</b>	<b>23%</b>
<b>NET OPERATING EXPENDITURE</b>	<b>928,442</b>	<b>717,318</b>	<b>-211,124</b>	<b>3,883,323</b>	<b>-3,166,005</b>	<b>18%</b>
<b>OPERATING MARGIN</b>		<b>44.82%</b>			<b>54.60%</b>	

**FINANCIAL STATEMENT BY DEPT**

1 January - 31 March 2024

	YEAR TO DATE			ANNUAL		
	2023 Actual (\$) (a)	2024 Actual (\$) (b)	Variance (\$) (c) = (b) - (a)	2024 Budget (\$) (d)	2023 Budget Variance (\$) (e) = (b) - (d)	2023 Budget (%) (f) = (b) / (d)
<b>CODE DEPARTMENT/DIVISION</b>						
100 Monash Student Council	380,578	377,670	-2,908	2,079,267	-1,701,597	18%
110 Education Public	7,853	6,680	-1,173	35,019	-28,339	19%
120 Education Academic	6,389	6,302	-87	41,549	-35,247	15%
130 Women's	5,246	4,874	-372	44,722	-39,848	11%
140 Welfare	7,973	7,990	17	53,722	-45,732	15%
150 Queer	7,022	5,255	-1,767	41,452	-36,197	13%
160 Environment & Social Justice	5,095	4,923	-172	32,662	-27,739	15%
170 Indigenous	6,062	4,848	-1,214	36,572	-31,724	13%
180 Disability	5,537	7,177	1,640	34,642	-27,465	21%
190 People of Colour	5,146	8,287	3,141	38,872	-30,585	21%
200 Activities	-13,205	-1,699	11,506	86,107	-87,806	-2%
210 Lot's Wife	11,029	15,878	4,849	72,721	-56,843	22%
220 Creative Live Arts	5,818	5,818	0	58,257	-52,439	10%
230 Residential Committee	5,193	6,552	1,359	42,572	-36,020	15%
250 The Bike Shop	6,197	939	-5,258	20,141	-19,202	5%
300 Wholefoods	12,618	32,606	19,988	6,753	25,853	483%
350 Sir John's Bar*	58,802	-73,920	-132,722	48,178	-122,098	-153%
400 MTPD*	-69,721	-358,967	-289,246	-143,353	-215,614	250%
500 Host Scheme & Volunteering	168,889	186,122	17,233	262,516	-76,394	71%
520 Student Advocacy & Support	272,667	227,165	-45,502	366,200	-139,035	62%
550 Student Theatre	173,999	187,830	13,831	250,641	-62,811	75%
600 Clubs & Societies	325,295	336,633	11,338	484,940	-148,307	69%
650 MAPS	13,709	15,030	1,321	25,627	-10,597	59%
700 MUISS	57,854	57,195	-659	100,712	-43,517	57%
750 Radio Monash	11,042	3,849	-7,193	16,380	-12,531	23%
800 SURLY	92,297	123,663	31,366	178,252	-54,589	69%
<b>TOTAL OPERATING EXPENSES</b>	<b>1,569,384</b>	<b>1,198,700</b>	<b>-370,684</b>	<b>4,315,123</b>	<b>-3,116,423</b>	<b>28%</b>

\*Denotes MSA Surplus Generating Departments

**FY24 SUMMARY**

	Actual	Budget	Variance	% Budget
Income	\$ 1,374,061	\$ 3,229,269	-\$ 1,855,208	42.55%
Expenditure	\$ 2,729,148	\$ 7,112,592	-\$ 4,383,444	38.37%
<b>Net Expenditure</b>	<b>\$ 1,355,087</b>	<b>\$ 3,883,323</b>	<b>\$ -</b>	<b>34.90%</b>
SSAF	\$ 2,980,649	\$ 3,974,198	\$ 993,549	75.00%

Net Expenditure	\$	<b>1,355,087</b>
Budget	\$	3,883,323
<b>% Budget</b>		<b>34.90%</b>
% Expected		41.67%

**BUDGET VS. ACTUAL**

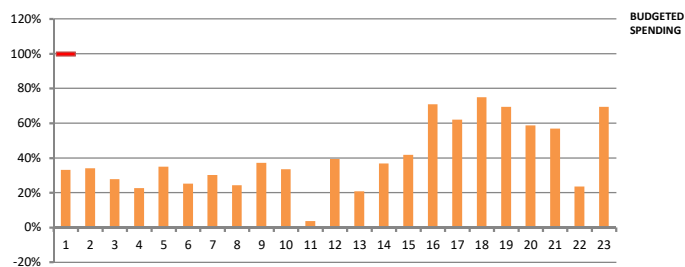


Figure 1. Percentage Variance By Department / Division

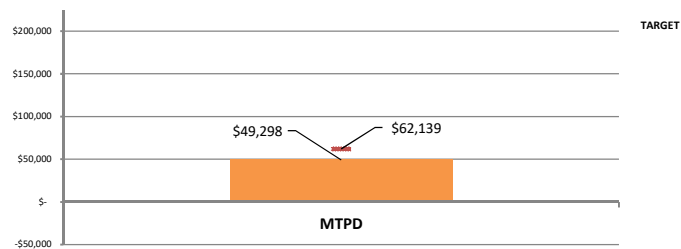


Figure 2. MSA Surplus Generating Department

**CAPITAL EXPENDITURE**

<b>MAY 2024</b>	\$	2,444
TV for SAS		

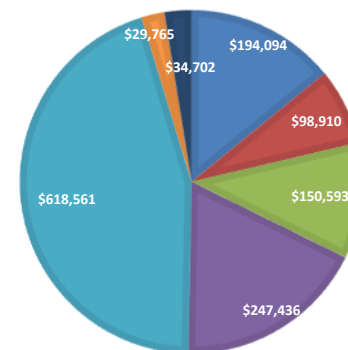
**DEPARTMENTS & DIVISIONS**

1. Monash Student Council
2. Education Public
3. Education Academic
4. Women's
5. Welfare
6. Queer
7. Environment & Social Justice
8. Indigenous
9. Disabilities & Carers
10. People of Colour
11. Activities
12. Lot's Wife
13. Creative Live Arts
14. Residential Communities
15. The Bike Shop
16. Host Scheme & Volunteering
17. Student Advocacy & Support
18. MUST
19. Clubs & Societies
20. MAPS
21. MUISS
22. Radio Monash
23. SURLY

**MSA+ SALES**

	YTD	MONTH
<b>2023</b>	<b>8,917</b>	<b>132</b>
<b>2024</b>	<b>9,148</b>	<b>162</b>
2024 - G	493	8
2024 - S	8,655	154

**INCOME**



**INCOME SOURCES**

- 1 Contributions & Investment
- 2 MSA+
- 3 Advertising & Sponsorship
- 4 Sales
- 5 Course Revenue
- 6 Events Income
- 7 Other Income

Figure 3. Breakdown of Income Sources

**TOP 5 EVENTS\***

<b>*In 2024 data is incomplete as MSA Finance is not privy to non-ticketed attendance data.</b>		
<b>VOL</b>	Monash Open Day Ambassador Interviews	<b>724</b>
<b>MUST</b>	Stupid Fucking Bird	<b>342</b>
<b>VOL</b>	Monash Discover Melbourne: ArtVo	<b>159</b>
<b>CLA</b>	Afrobeats	<b>114</b>
<b>PoC</b>	Pizza & Games Night	<b>100</b>

**FINANCIAL ANALYSIS FOR THE MONTH**

MSA is performing at 35% of its budgeted spending, performing better than the targeted 42%. The Finance Audit Risk committee continuously monitoring the financial performance, addressing few areas of concerns with the outlets. There are few strategies to be discussed to further reduce losses.

MSA investment portfolio continues to deliver with January to May with the reported increase of 3.44%

**INCOME STATEMENT**

1 January - 31 May 2024

	YEAR TO DATE			ANNUAL		
	2023 Actual	2024 Actual	Variance	2024 Budget	2023 Budget	2023 Budget
	(\$)	(\$)	(\$)	(\$)	Variance (\$)	(%)
	(a)	(b)	(c) = (b) - (a)	(d)	(e) = (b) - (d)	(f) = (b) / (d)
<b>INCOME</b>						
Contribution	5,665	106,282	100,617	48,600	57,682	219%
Investment	76,355	87,812	11,457	225,000	-137,188	39%
MSA Rewards Sales	95,418	98,910	3,492	127,623	-28,713	78%
Advertising & Sponsorship	111,322	150,593	39,271	165,000	-14,407	91%
Sales	201,224	247,436	46,212	790,714	-543,278	31%
Courses Revenue	502,703	618,561	115,858	1,629,788	-1,011,227	38%
Fines & Charges	28,940	12,675	-16,265	24,850	-12,175	51%
Office Supplies	1,074	816	-258	1,050	-234	78%
Activities	450	0	-450	44,500	-44,500	0%
Functions & Productions	59,986	29,765	-30,221	109,500	-79,735	27%
Other Income	22,920	21,211	-1,709	62,644	-41,433	34%
<b>TOTAL OPERATING INCOME</b>	<b>1,106,057</b>	<b>1,374,061</b>	<b>268,004</b>	<b>3,229,269</b>	<b>-1,855,208</b>	<b>43%</b>
<b>EXPENDITURE</b>						
Salaries & On Costs	1,666,426	1,861,315	194,889	4,772,746	-2,911,431	39%
Building & Maintenance	15,517	12,920	-2,597	32,801	-19,881	39%
Equipment	49,247	4,520	-44,727	24,000	-19,480	19%
Software Development & Licence	178,471	113,611	-64,860	220,275	-106,664	52%
Fees & Administrative Charges	41,493	52,475	10,982	251,647	-199,172	21%
Legal & Consultancy	44,987	22,201	-22,786	65,000	-42,799	34%
Office Expenses	34,025	30,082	-3,943	88,500	-58,418	34%
Subscriptions	7,471	9,710	2,239	18,100	-8,390	54%
Training & Conference	10,939	14,015	3,076	64,268	-50,253	22%
Grants & Donations	42,113	61,894	19,781	178,500	-116,606	35%
Projects & Campaigns	125,220	130,068	4,848	311,426	-181,358	42%
Activities	115,883	115,720	-163	253,834	-138,114	46%
Functions & Productions	52,938	93,297	40,359	246,800	-153,503	38%
Cost of Goods Sold	150,720	123,960	-26,760	354,674	-230,714	35%
Other Expenses	108,354	83,360	-24,994	230,021	-146,661	36%
<b>TOTAL OPERATING EXPENSES</b>	<b>2,643,804</b>	<b>2,729,148</b>	<b>85,344</b>	<b>7,112,592</b>	<b>-4,383,444</b>	<b>38%</b>
<b>NET OPERATING EXPENDITURE</b>	<b>1,537,747</b>	<b>1,355,087</b>	<b>-182,660</b>	<b>3,883,323</b>	<b>-2,528,236</b>	<b>35%</b>
<b>OPERATING MARGIN</b>		<b>49.65%</b>			<b>54.60%</b>	

**FINANCIAL STATEMENT BY DEPT**

1 January - 31 May 2024

	YEAR TO DATE			ANNUAL		
	2023 Actual	2024 Actual	2022/2023	2024 Budget	2023 Budget	2023 Budget
	(\$)	(\$)	Variance (\$)	(\$)	Variance (\$)	(%)
	(a)	(b)	(c) = (b) - (a)	(d)	(e) = (b) - (d)	(f) = (b) / (d)
<b>CODE DEPARTMENT/DIVISION</b>						
100 Monash Student Council	604,679	689,455	84,776	2,079,267	-1,389,812	33%
110 Education Public	11,785	11,932	147	35,019	-23,087	34%
120 Education Academic	10,591	11,554	963	41,549	-29,995	28%
130 Women's	8,925	10,084	1,159	44,722	-34,638	23%
140 Welfare	13,312	18,786	5,474	53,722	-34,936	35%
150 Queer	12,776	10,413	-2,363	41,452	-31,039	25%
160 Environment & Social Justice	13,986	9,885	-4,101	32,662	-22,777	30%
170 Indigenous	10,041	8,888	-1,153	36,572	-27,684	24%
180 Disability	9,165	12,863	3,698	34,642	-21,779	37%
190 People of Colour	8,378	13,013	4,635	38,872	-25,859	33%
200 Activities	-5,506	3,149	8,655	86,107	-82,958	4%
210 Lot's Wife	23,284	28,650	5,366	72,721	-44,071	39%
220 Creative Live Arts	8,726	12,069	3,343	58,257	-46,188	21%
230 Residential Committee	15,484	15,640	156	42,572	-26,932	37%
250 The Bike Shop	6,277	8,411	2,134	20,141	-11,730	42%
300 Wholefoods	24,328	45,434	21,106	6,753	38,681	673%
350 Sir John's Bar*	58,802	-73,920	-132,722	48,178	-122,098	-153%
400 MTPD*	-69,721	-358,967	-289,246	-143,353	-215,614	250%
500 Host Scheme & Volunteering	168,889	186,122	17,233	262,516	-76,394	71%
520 Student Advocacy & Support	272,667	227,165	-45,502	366,200	-139,035	62%
550 Student Theatre	173,999	187,830	13,831	250,641	-62,811	75%
600 Clubs & Societies	325,295	336,633	11,338	484,940	-148,307	69%
650 MAPS	13,709	15,030	1,321	25,627	-10,597	59%
700 MUISS	57,854	57,195	-659	100,712	-43,517	57%
750 Radio Monash	11,042	3,849	-7,193	16,380	-12,531	23%
800 SURLY	92,297	123,663	31,366	178,252	-54,589	69%
<b>TOTAL OPERATING EXPENSES</b>	<b>1,881,064</b>	<b>1,614,826</b>	<b>-266,238</b>	<b>4,315,123</b>	<b>-2,700,297</b>	<b>37%</b>

\*Denotes MSA Surplus Generating Departments

**FY24 SUMMARY**

	Actual	Budget	Variance	% Budget
Income	\$ 2,215,174	\$ 3,229,269	-\$ 1,014,095	68.60%
Expenditure	\$ 4,499,074	\$ 7,112,592	-\$ 2,613,518	63.26%
<b>Net Expenditure</b>	<b>\$ 2,283,900</b>	<b>\$ 3,883,323</b>	<b>\$ -</b>	<b>58.81%</b>
SSAF	\$ 3,974,198	\$ 3,974,198	\$ -	100.00%

Net Expenditure	\$	<b>2,283,900</b>
Budget	\$	3,883,323
<b>% Budget</b>		<b>58.81%</b>
% Expected		58.33%

**BUDGET VS. ACTUAL**

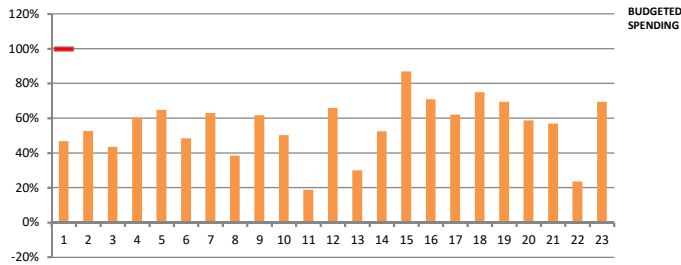


Figure 1. Percentage Variance By Department / Division

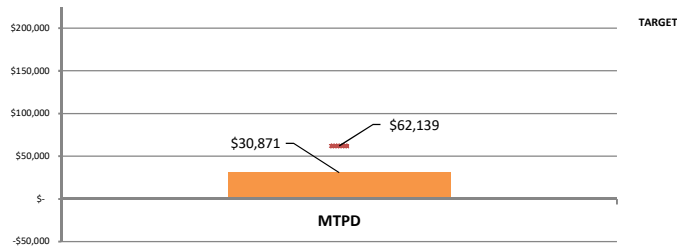


Figure 2. MSA Surplus Generating Department

**DEPARTMENTS & DIVISIONS**

1. Monash Student Council
2. Education Public
3. Education Academic
4. Women's
5. Welfare
6. Queer
7. Environment & Social Justice
8. Indigenous
9. Disabilities & Carers
10. People of Colour
11. Activities
12. Lot's Wife
13. Creative Live Arts
14. Residential Communities
15. The Bike Shop
16. Host Scheme & Volunteering
17. Student Advocacy & Support
18. MUST
19. Clubs & Societies
20. MAPS
21. MUISS
22. Radio Monash
23. SURLY

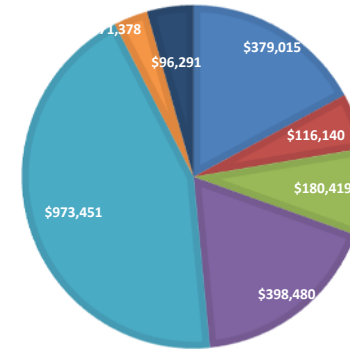
**MSA+ SALES**

	YTD	MONTH
2023	9,939	286
2024	10,299	306
2024 - G	591	22
2024 - S	9,708	284

**CAPITAL EXPENDITURE**

AUGUST 2024 \$ -

**INCOME**



**INCOME SOURCES**

- 1 Contributions & Investment
- 2 MSA+
- 3 Advertising & Sponsorship
- 4 Sales
- 5 Course Revenue
- 6 Events Income
- 7 Other Income

Figure 3. Breakdown of Income Sources

**TOP 5 EVENTS\***

*In 2024 data is incomplete as MSA Finance is not privy to non-ticketed attendance data.		
ESJ	Sustain Festival	<b>384</b>
ACT	Snackactivities - Week 3	<b>192</b>
Women's	Safe & Sexy Pink Party	<b>165</b>
MUISS	Welfare Lunch - Week 3	<b>150</b>
MUISS	Welfare Lunch - Week 5	<b>150</b>

**FINANCIAL ANALYSIS FOR THE MONTH**

MSA is performing right on the budgeted expenditure. All the outlets are fully operational this month with Wholefoods operating at a surplus. Sir John and MTPD made a loss, however MTPD has an overall surplus for the year.

Finance Audit Risk met to discuss budget planning for 2025 and with the budget process starting in mid September, efforts are made to reduce budget deficit in future years.

**INCOME STATEMENT**

1 January - 31 August 2024

	YEAR TO DATE			ANNUAL		
	2023 Actual	2024 Actual	Variance	2024 Budget	2023 Budget	2023 Budget
	(\$)	(\$)	(\$)	(\$)	Variance (\$)	(%)
	(a)	(b)	(c) = (b) - (a)	(d)	(e) = (b) - (d)	(f) = (b) / (d)
<b>INCOME</b>						
Contribution	15,002	162,267	147,265	48,600	113,667	334%
Investment	176,920	216,748	39,828	225,000	-8,252	96%
MSA Rewards Sales	109,279	116,140	6,861	127,623	-11,483	91%
Advertising & Sponsorship	147,492	180,419	32,927	165,000	15,419	109%
Sales	374,655	398,480	23,825	790,714	-392,234	50%
Courses Revenue	862,821	973,451	110,630	1,629,788	-656,337	60%
Fines & Charges	29,852	40,507	10,655	24,850	15,657	163%
Office Supplies	1,612	1,459	-153	1,050	409	139%
Activities	7,841	284	-7,557	44,500	-44,216	1%
Functions & Productions	122,057	71,094	-50,963	109,500	-38,406	65%
Other Income	46,876	54,325	7,449	62,644	-8,319	87%
<b>TOTAL OPERATING INCOME</b>	<b>1,894,407</b>	<b>2,215,174</b>	<b>320,767</b>	<b>3,229,269</b>	<b>-1,014,095</b>	<b>69%</b>
<b>EXPENDITURE</b>						
Salaries & On Costs	2,885,810	2,947,642	61,832	4,772,746	-1,825,104	62%
Building & Maintenance	19,582	18,084	-1,498	32,801	-14,717	55%
Equipment	157,041	214,079	57,038	24,000	190,079	892%
Software Development & Licence	234,815	180,813	-54,002	220,275	-39,462	82%
Fees & Administrative Charges	78,930	72,360	-6,570	251,647	-179,287	29%
Legal & Consultancy	64,537	58,150	-6,387	65,000	-6,850	89%
Office Expenses	43,405	41,493	-1,912	88,500	-47,007	47%
Subscriptions	9,388	11,842	2,454	18,100	-6,258	65%
Training & Conference	20,950	15,911	-5,039	64,268	-48,357	25%
Grants & Donations	86,895	104,582	17,687	178,500	-73,918	59%
Projects & Campaigns	154,674	177,400	22,726	311,426	-134,026	57%
Activities	137,712	147,799	10,087	253,834	-106,035	58%
Functions & Productions	233,809	156,251	-77,558	246,800	-90,549	63%
Cost of Goods Sold	244,804	214,149	-30,655	354,674	-140,525	60%
Other Expenses	168,094	138,519	-29,575	230,021	-91,502	60%
<b>TOTAL OPERATING EXPENSES</b>	<b>4,540,446</b>	<b>4,499,074</b>	<b>-41,372</b>	<b>7,112,592</b>	<b>-2,613,518</b>	<b>63%</b>
<b>NET OPERATING EXPENDITURE</b>	<b>2,646,039</b>	<b>2,283,900</b>	<b>-362,139</b>	<b>3,883,323</b>	<b>-1,599,423</b>	<b>59%</b>
<b>OPERATING MARGIN</b>		<b>50.76%</b>			<b>54.60%</b>	

**FINANCIAL STATEMENT BY DEPT**

1 January - 31 August 2024

	YEAR TO DATE			ANNUAL		
	2023 Actual	2024 Actual	2022/2023	2024 Budget	2023 Budget	2023 Budget
	(\$)	(\$)	Variance (\$)	(\$)	Variance (\$)	(%)
	(a)	(b)	(c) = (b) - (a)	(d)	(e) = (b) - (d)	(f) = (b) / (d)
<b>CODE DEPARTMENT/DIVISION</b>						
100 Monash Student Council	936,916	970,715	33,799	2,079,267	-1,108,552	47%
110 Education Public	19,254	18,433	-821	35,019	-16,586	53%
120 Education Academic	18,060	18,056	-4	41,549	-23,493	43%
130 Women's	27,194	27,036	-158	44,722	-17,686	60%
140 Welfare	26,687	34,798	8,111	53,722	-18,924	65%
150 Queer	20,779	20,036	-743	41,452	-21,416	48%
160 Environment & Social Justice	22,273	20,531	-1,742	32,662	-12,131	63%
170 Indigenous	16,463	14,089	-2,374	36,572	-22,483	39%
180 Disability	14,943	21,358	6,415	34,642	-13,284	62%
190 People of Colour	14,293	19,515	5,222	38,872	-19,357	50%
200 Activities	71,078	16,177	-54,901	86,107	-69,930	19%
210 Lot's Wife	39,468	47,910	8,442	72,721	-24,811	66%
220 Creative Live Arts	16,592	17,512	920	58,257	-40,745	30%
230 Residential Committee	21,229	22,324	1,095	42,572	-20,248	52%
250 The Bike Shop	11,193	17,497	6,304	20,141	-2,644	87%
300 Wholefoods	37,138	49,534	12,396	6,753	42,781	734%
350 Sir John's Bar*	58,802	-73,920	-132,722	48,178	-122,098	-153%
400 MTPD*	-69,721	-358,967	-289,246	-143,353	-215,614	250%
500 Host Scheme & Volunteering	168,889	186,122	17,233	262,516	-76,394	71%
520 Student Advocacy & Support	272,667	227,165	-45,502	366,200	-139,035	62%
550 Student Theatre	173,999	187,830	13,831	250,641	-62,811	75%
600 Clubs & Societies	325,295	336,633	11,338	484,940	-148,307	69%
650 MAPS	13,709	15,030	1,321	25,627	-10,597	59%
700 MUISS	57,854	57,195	-659	100,712	-43,517	57%
750 Radio Monash	11,042	3,849	-7,193	16,380	-12,531	23%
800 SURLY	92,297	123,663	31,366	178,252	-54,589	69%
<b>TOTAL OPERATING EXPENSES</b>	<b>2,418,393</b>	<b>2,040,121</b>	<b>-378,272</b>	<b>4,315,123</b>	<b>-2,275,002</b>	<b>47%</b>

\*Denotes MSA Surplus Generating Departments

**FY24 SUMMARY**

	Actual	Budget	Variance	% Budget
Income	\$ 2,415,986	\$ 3,229,269	-\$ 813,283	74.82%
Expenditure	\$ 5,081,620	\$ 7,112,592	-\$ 2,030,972	71.45%
<b>Net Expenditure</b>	<b>\$ 2,665,634</b>	<b>\$ 3,883,323</b>	<b>\$ -</b>	<b>68.64%</b>
<b>SSAF</b>	<b>\$ 3,974,198</b>	<b>\$ 3,974,198</b>	<b>\$ -</b>	<b>100.00%</b>

Net Expenditure	\$	2,665,634
Budget	\$	3,883,323
<b>% Budget</b>		<b>68.64%</b>
% Expected		75.00%

**BUDGET VS. ACTUAL**

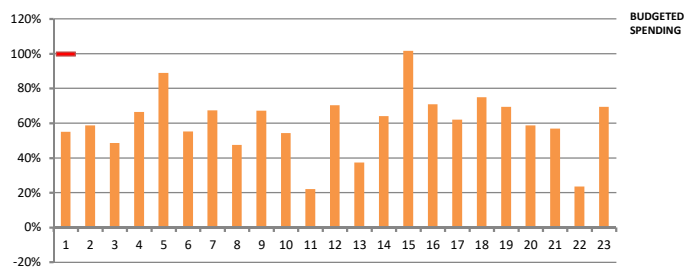


Figure 1. Percentage Variance By Department / Division

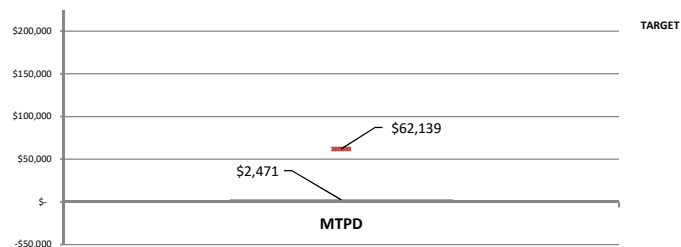


Figure 2. MSA Surplus Generating Department

**DEPARTMENTS & DIVISIONS**

1. Monash Student Council
2. Education Public
3. Education Academic
4. Women's
5. Welfare
6. Queer
7. Environment & Social Justice
8. Indigenous
9. Disabilities & Carers
10. People of Colour
11. Activities
12. Lot's Wife
13. Creative Live Arts
14. Residential Communities
15. The Bike Shop
16. Host Scheme & Volunteering
17. Student Advocacy & Support
18. MUST
19. Clubs & Societies
20. MAPS
21. MUISS
22. Radio Monash
23. SURLY

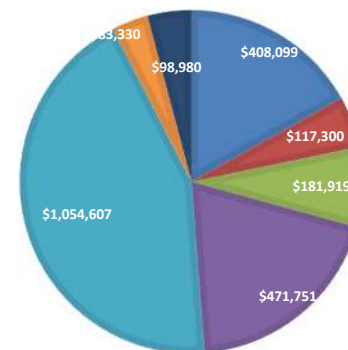
**MSA+ SALES**

	YTD	MONTH
2023	10,093	110
2024	10,402	101
2024 - G	593	2
2024 - S	9,809	99

**CAPITAL EXPENDITURE**

SEPTEMBER 2024 \$ -  
No capital purchase for the month

**INCOME**



**INCOME SOURCES**

- 1 Contributions & Investment
- 2 MSA+
- 3 Advertising & Sponsorship
- 4 Sales
- 5 Course Revenue
- 6 Events Income
- 7 Other Income

Figure 3. Breakdown of Income Sources

**TOP 5 EVENTS\***

\*In 2024 data is incomplete as MSA Finance is not privy to non-ticketed attendance data.

MUISS	Welfare Lunch Week 7	150
MUISS	Welfare Lunch Week 9	141
Queer	Queer Ball: PUNK	128
MSC	Wednesday Sessions Week 7 - Elkie & Scarlet	121
MSC	Wednesday Sessions Week 9 - Oktoberfest	120

**FINANCIAL ANALYSIS FOR THE MONTH**

MSA performed at 67% of its budgeted expenditure, 8% less than the expected. MSA continues to look for ways to reduce the deficit for the organisation as the outlets haven't been performing to its expectation.

2025 Budget process has commenced and budget committee will be meeting with various areas to discuss the 2025 budget on the third week of October. The committee is working towards the breakeven budget for 2025

**INCOME STATEMENT**

1 January - 30 September 2024

	YEAR TO DATE			ANNUAL		
	2023 Actual	2024 Actual	Variance	2024 Budget	2023 Budget	2023 Budget
	(\$)	(\$)	(\$)	(\$)	Variance (\$)	(%)
	(a)	(b)	(c) = (b) - (a)	(d)	(e) = (b) - (d)	(f) = (b) / (d)
<b>INCOME</b>						
Contribution	21,102	162,767	141,665	48,600	114,167	335%
Investment	198,225	245,332	47,107	225,000	20,332	109%
MSA Rewards Sales	109,186	117,300	8,114	127,623	-10,323	92%
Advertising & Sponsorship	161,073	181,919	20,846	165,000	16,919	110%
Sales	440,563	471,751	31,188	790,714	-318,963	60%
Courses Revenue	1,020,682	1,054,607	33,925	1,629,788	-575,181	65%
Fines & Charges	30,036	42,143	12,107	24,850	17,293	170%
Office Supplies	1,887	1,599	-288	1,050	549	152%
Activities	7,841	284	-7,557	44,500	-44,216	1%
Functions & Productions	131,586	83,046	-48,540	109,500	-26,454	76%
Other Income	49,369	55,238	5,869	62,644	-7,406	88%
<b>TOTAL OPERATING INCOME</b>	<b>2,171,550</b>	<b>2,415,986</b>	<b>244,436</b>	<b>3,229,269</b>	<b>-813,283</b>	<b>75%</b>
<b>EXPENDITURE</b>						
Salaries & On Costs	3,278,694	3,339,183	60,489	4,772,746	-1,433,563	70%
Building & Maintenance	22,226	18,798	-3,428	32,801	-14,003	57%
Equipment	174,585	216,857	42,272	24,000	192,857	904%
Software Development & Licence	244,275	194,224	-50,051	220,275	-26,051	88%
Fees & Administrative Charges	82,828	109,884	27,056	251,647	-141,763	44%
Legal & Consultancy	81,892	61,794	-20,098	65,000	-3,206	95%
Office Expenses	43,914	42,596	-1,318	88,500	-45,904	48%
Subscriptions	10,221	11,496	1,275	18,100	-6,604	64%
Training & Conference	21,950	21,712	-238	64,268	-42,556	34%
Grants & Donations	86,895	124,787	37,892	178,500	-53,713	70%
Projects & Campaigns	200,930	199,469	-1,461	311,426	-111,957	64%
Activities	162,644	173,810	11,166	253,834	-80,024	68%
Functions & Productions	214,212	170,068	-44,144	246,800	-76,732	69%
Cost of Goods Sold	268,730	243,001	-25,729	354,674	-111,673	69%
Other Expenses	183,661	153,941	-29,720	230,021	-76,080	67%
<b>TOTAL OPERATING EXPENSES</b>	<b>5,077,657</b>	<b>5,081,620</b>	<b>3,963</b>	<b>7,112,592</b>	<b>-2,030,972</b>	<b>71%</b>
<b>NET OPERATING EXPENDITURE</b>	<b>2,906,107</b>	<b>2,665,634</b>	<b>-240,473</b>	<b>3,883,323</b>	<b>-1,217,689</b>	<b>69%</b>
<b>OPERATING MARGIN</b>		<b>52.46%</b>			<b>54.60%</b>	

**FINANCIAL STATEMENT BY DEPT**

1 January - 30 September 2024

	YEAR TO DATE			ANNUAL		
	2023 Actual	2024 Actual	2022/2023	2024 Budget	2023 Budget	2023 Budget
	(\$)	(\$)	Variance (\$)	(\$)	Variance (\$)	(%)
	(a)	(b)	(c) = (b) - (a)	(d)	(e) = (b) - (d)	(f) = (b) / (d)
<b>CODE DEPARTMENT/DIVISION</b>						
100 Monash Student Council	1,072,253	1,142,557	70,304	2,079,267	-936,710	55%
110 Education Public	20,074	20,534	460	35,019	-14,485	59%
120 Education Academic	20,161	20,157	-4	41,549	-21,392	49%
130 Women's	29,665	29,743	78	44,722	-14,979	67%
140 Welfare	29,773	47,766	17,993	53,722	-5,956	89%
150 Queer	27,603	22,887	-4,716	41,452	-18,565	55%
160 Environment & Social Justice	23,889	21,986	-1,903	32,662	-10,676	67%
170 Indigenous	18,859	17,343	-1,516	36,572	-19,229	47%
180 Disability	16,834	23,286	6,452	34,642	-11,356	67%
190 People of Colour	16,480	21,131	4,651	38,872	-17,741	54%
200 Activities	42,772	18,956	-23,816	86,107	-67,151	22%
210 Lot's Wife	42,756	51,200	8,444	72,721	-21,521	70%
220 Creative Live Arts	48,540	21,733	-26,807	58,257	-36,524	37%
230 Residential Committee	23,327	27,306	3,979	42,572	-15,266	64%
250 The Bike Shop	14,187	20,483	6,296	20,141	342	102%
300 Wholefoods	48,538	60,409	11,871	6,753	53,656	895%
350 Sir John's Bar*	58,802	-73,920	-132,722	48,178	-122,098	-153%
400 MTPD*	-69,721	-358,967	-289,246	-143,353	-215,614	250%
500 Host Scheme & Volunteering	168,889	186,122	17,233	262,516	-76,394	71%
520 Student Advocacy & Support	272,667	227,165	-45,502	366,200	-139,035	62%
550 Student Theatre	173,999	187,830	13,831	250,641	-62,811	75%
600 Clubs & Societies	325,295	336,633	11,338	484,940	-148,307	69%
650 MAPS	13,709	15,030	1,321	25,627	-10,597	59%
700 MUISS	57,854	57,195	-659	100,712	-43,517	57%
750 Radio Monash	11,042	3,849	-7,193	16,380	-12,531	23%
800 SURLY	92,297	123,663	31,366	178,252	-54,589	69%
<b>TOTAL OPERATING EXPENSES</b>	<b>2,600,544</b>	<b>2,272,077</b>	<b>-328,467</b>	<b>4,315,123</b>	<b>-2,043,046</b>	<b>53%</b>

\*Denotes MSA Surplus Generating Departments

**FY24 SUMMARY**

	Actual	Budget	Variance	% Budget
Income	\$ 2,686,082	\$ 3,229,269	-\$ 543,187	83.18%
Expenditure	\$ 5,842,026	\$ 7,112,592	-\$ 1,270,566	82.14%
<b>Net Expenditure</b>	<b>\$ 3,155,944</b>	<b>\$ 3,883,323</b>	<b>\$ -</b>	<b>81.27%</b>
<b>SSAF</b>	<b>\$ 3,974,198</b>	<b>\$ 3,974,198</b>	<b>\$ -</b>	<b>100.00%</b>

Net Expenditure	\$	<b>3,155,944</b>
Budget	\$	3,883,323
<b>% Budget</b>		<b>81.27%</b>
% Expected		83.33%

**BUDGET VS. ACTUAL**

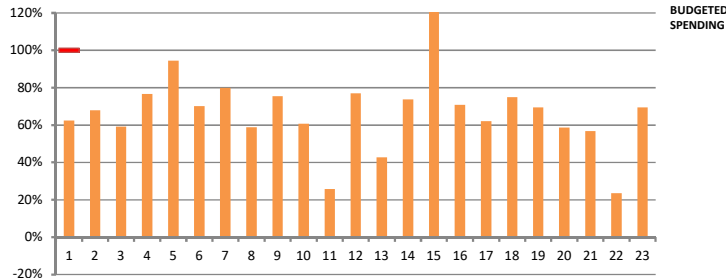


Figure 1. Percentage Variance By Department / Division

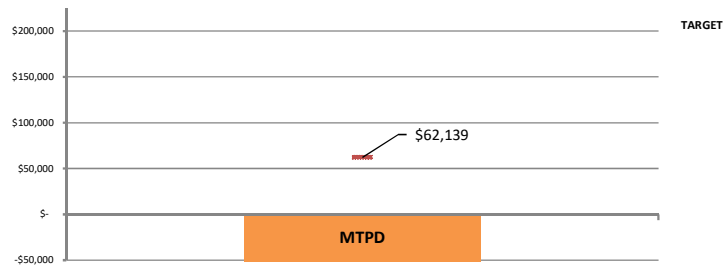


Figure 2. MSA Surplus Generating Department

**CAPITAL EXPENDITURE**

<b>OCTOBER 2024</b>	\$	2,949
MUST Liquid Storage Cabinet and toaster repair for Volunteering		

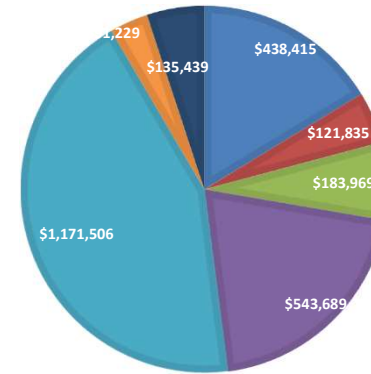
**DEPARTMENTS & DIVISIONS**

1. Monash Student Council
2. Education Public
3. Education Academic
4. Women's
5. Welfare
6. Queer
7. Environment & Social Justice
8. Indigenous
9. Disabilities & Carers
10. People of Colour
11. Activities
12. Lot's Wife
13. Creative Live Arts
14. Residential Communities
15. The Bike Shop
16. Host Scheme & Volunteering
17. Student Advocacy & Support
18. MUST
19. Clubs & Societies
20. MAPS
21. MUISS
22. Radio Monash
23. SURLY

**MSA+ SALES**

	YTD	MONTH
<b>2023</b>	10,093	36
<b>2024</b>	10,483	76
2024 - G	596	3
2024 - S	9,887	73

**INCOME**



**INCOME SOURCES**

- 1 Contributions & Investment
- 2 MSA+
- 3 Advertising & Sponsorship
- 4 Sales
- 5 Course Revenue
- 6 Events Income
- 7 Other Income

Figure 3. Breakdown of Income Sources

**TOP 5 EVENTS\***

\*In 2024 data is incomplete as MSA Finance is not privy to non-ticketed attendance data.

<b>MUISS</b>	One World Festival	<b>614</b>
<b>ResCom</b>	Food Drop #8	<b>178</b>
<b>CLA</b>	Kpop Night	<b>104</b>
<b>MUISS</b>	Welfare Lunch Week 11	<b>98</b>
<b>WF</b>	End of Semester Party	<b>85</b>

**FINANCIAL ANALYSIS FOR THE MONTH**

MSA performed at 81% of its budgeted expenditure, close to the expected amount. Following this trend, MSA will be looking at around the forecasted deficit, pending on SSAF adjustments at the end of 2024. MSA outlets have not been performing to the expected budget in October, with the sales not meeting its targeted budget.

2025 Budget process has been delayed and Budget Committee are working hard to ensure that budget will still be delivered by the end of the year.

**INCOME STATEMENT**

1 January - 31 October 2024

	YEAR TO DATE			ANNUAL		
	2023 Actual (\$)	2024 Actual (\$)	Variance (\$)	2024 Budget (\$)	2023 Budget Variance (\$)	2023 Budget (%)
	(a)	(b)	(c) = (b) - (a)	(d)	(e) = (b) - (d)	(f) = (b) / (d)
<b>INCOME</b>						
Contribution	43,102	171,802	128,700	48,600	123,202	354%
Investment	211,655	266,613	54,958	225,000	41,613	118%
MSA Rewards Sales	107,536	121,835	14,299	127,623	-5,788	95%
Advertising & Sponsorship	164,160	183,969	19,809	165,000	18,969	111%
Sales	505,641	543,689	38,048	790,714	-247,025	69%
Courses Revenue	1,169,924	1,171,506	1,582	1,629,788	-458,282	72%
Fines & Charges	31,939	51,330	19,391	24,850	26,480	207%
Office Supplies	2,214	1,867	-347	1,050	817	178%
Activities	7,841	1,550	-6,291	44,500	-42,950	3%
Functions & Productions	144,725	89,679	-55,046	109,500	-19,821	82%
Other Income	53,296	82,242	28,946	62,644	19,598	131%
<b>TOTAL OPERATING INCOME</b>	<b>2,442,033</b>	<b>2,686,082</b>	<b>244,049</b>	<b>3,229,269</b>	<b>-543,187</b>	<b>83%</b>
<b>EXPENDITURE</b>						
Salaries & On Costs	3,653,186	3,892,616	239,430	4,772,746	-880,130	82%
Building & Maintenance	23,649	20,316	-3,333	32,801	-12,485	62%
Equipment	189,278	264,441	75,163	24,000	240,441	1102%
Software Development & Licence	255,490	202,450	-53,040	220,275	-17,825	92%
Fees & Administrative Charges	125,228	112,159	-13,069	251,647	-139,488	45%
Legal & Consultancy	83,242	71,373	-11,869	65,000	6,373	110%
Office Expenses	53,162	45,287	-7,875	88,500	-43,213	51%
Subscriptions	11,108	12,897	1,789	18,100	-5,203	71%
Training & Conference	30,549	30,129	-420	64,268	-34,139	47%
Grants & Donations	98,870	138,148	39,278	178,500	-40,352	77%
Projects & Campaigns	234,161	210,447	-23,714	311,426	-100,979	68%
Activities	196,169	197,445	1,276	253,834	-56,389	78%
Functions & Productions	217,343	175,885	-41,458	246,800	-70,915	71%
Cost of Goods Sold	305,506	286,713	-18,793	354,674	-67,961	81%
Other Expenses	196,661	181,720	-14,941	230,021	-48,301	79%
<b>TOTAL OPERATING EXPENSES</b>	<b>5,673,602</b>	<b>5,842,026</b>	<b>168,424</b>	<b>7,112,592</b>	<b>-1,270,566</b>	<b>82%</b>
<b>NET OPERATING EXPENDITURE</b>	<b>3,231,569</b>	<b>3,155,944</b>	<b>-75,625</b>	<b>3,883,323</b>	<b>-727,379</b>	<b>81%</b>
<b>OPERATING MARGIN</b>		<b>54.02%</b>		<b>54.60%</b>		

**FINANCIAL STATEMENT BY DEPT**

1 January - 31 October 2024

	YEAR TO DATE			ANNUAL		
	2023 Actual (\$)	2024 Actual (\$)	2022/2023 Variance (\$)	2024 Budget (\$)	2023 Budget Variance (\$)	2023 Budget (%)
	(a)	(b)	(c) = (b) - (a)	(d)	(e) = (b) - (d)	(f) = (b) / (d)
<b>CODE DEPARTMENT/DIVISION</b>						
100 Monash Student Council	1,245,710	1,297,444	51,734	2,079,267	-781,823	62%
110 Education Public	22,175	23,791	1,616	35,019	-11,228	68%
120 Education Academic	23,447	24,623	1,176	41,549	-16,926	59%
130 Women's	26,508	34,254	7,746	44,722	-10,468	77%
140 Welfare	36,202	50,796	14,594	53,722	-2,926	95%
150 Queer	27,985	29,099	1,114	41,452	-12,353	70%
160 Environment & Social Justice	25,505	26,099	594	32,662	-6,563	80%
170 Indigenous	20,501	21,527	1,026	36,572	-15,045	59%
180 Disability	21,288	26,121	4,833	34,642	-8,521	75%
190 People of Colour	28,291	23,555	-4,736	38,872	-15,317	61%
200 Activities	52,623	22,203	-30,420	86,107	-63,904	26%
210 Lot's Wife	53,451	55,943	2,492	72,721	-16,778	77%
220 Creative Live Arts	50,479	24,875	-25,604	58,257	-33,382	43%
230 Residential Committee	33,478	31,413	-2,065	42,572	-11,159	74%
250 The Bike Shop	14,413	25,490	11,077	20,141	5,349	127%
300 Wholefoods	51,108	76,023	24,915	6,753	69,270	1126%
350 Sir John's Bar*	58,802	-73,920	-132,722	48,178	-122,098	-153%
400 MTPD*	-69,721	-358,967	-289,246	-143,353	-215,614	250%
500 Host Scheme & Volunteering	168,889	186,122	17,233	262,516	-76,394	71%
520 Student Advocacy & Support	272,667	227,165	-45,502	366,200	-139,035	62%
550 Student Theatre	173,999	187,830	13,831	250,641	-62,811	75%
600 Clubs & Societies	325,295	336,633	11,338	484,940	-148,307	69%
650 MAPS	13,709	15,030	1,321	25,627	-10,597	59%
700 MUISS	57,854	57,195	-659	100,712	-43,517	57%
750 Radio Monash	11,042	3,849	-7,193	16,380	-12,531	23%
800 SURLY	92,297	123,663	31,366	178,252	-54,589	69%
<b>TOTAL OPERATING EXPENSES</b>	<b>2,837,997</b>	<b>2,497,856</b>	<b>-340,141</b>	<b>4,315,123</b>	<b>-1,817,267</b>	<b>58%</b>

\*Denotes MSA Surplus Generating Departments

**FY24 SUMMARY**

	Actual	Budget	Variance	% Budget
Income	\$ 2,974,940	\$ 3,229,269	-\$ 254,329	92.12%
Expenditure	\$ 6,303,194	\$ 7,112,592	-\$ 809,398	88.62%
<b>Net Expenditure</b>	<b>\$ 3,328,254</b>	<b>\$ 3,883,323</b>	<b>\$ -</b>	<b>85.71%</b>
<b>SSAF</b>	<b>\$ 3,974,198</b>	<b>\$ 3,974,198</b>	<b>\$ -</b>	<b>100.00%</b>

Net Expenditure	\$	<b>3,328,254</b>
Budget	\$	3,883,323
<b>% Budget</b>		<b>85.71%</b>
% Expected		91.67%

**BUDGET VS. ACTUAL**

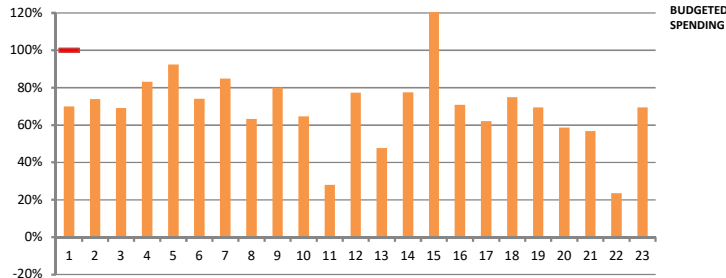


Figure 1. Percentage Variance By Department / Division

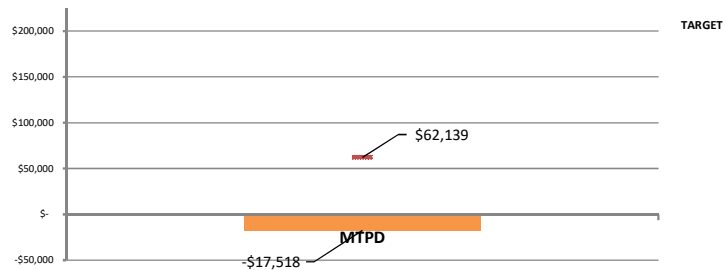


Figure 2. MSA Surplus Generating Department

**CAPITAL EXPENDITURE**

**NOVEMBER 2024**

N/A

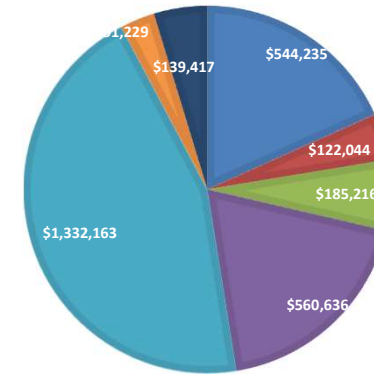
**DEPARTMENTS & DIVISIONS**

1. Monash Student Council
2. Education Public
3. Education Academic
4. Women's
5. Welfare
6. Queer
7. Environment & Social Justice
8. Indigenous
9. Disabilities & Carers
10. People of Colour
11. Activities
12. Lot's Wife
13. Creative Live Arts
14. Residential Communities
15. The Bike Shop
16. Host Scheme & Volunteering
17. Student Advocacy & Support
18. MUST
19. Clubs & Societies
20. MAPS
21. MUISS
22. Radio Monash
23. SURLY

**MSA+ SALES**

	YTD	MONTH
<b>2023</b>	10,093	0
<b>2024</b>	10,506	23
2024 - G	596	0
2024 - S	9,910	23

**INCOME**



**INCOME SOURCES**

- 1 Contributions & Investment
- 2 MSA+
- 3 Advertising & Sponsorship
- 4 Sales
- 5 Course Revenue
- 6 Events Income
- 7 Other Income

Figure 3. Breakdown of Income Sources

**TOP 5 EVENTS\***

\*In 2024 data is incomplete as MSA Finance is not privy to non-ticketed attendance data.

<b>MSC</b>	Student Leaders Conference	<b>135</b>
<b>EdAc</b>	Teaching Awards Night	<b>46</b>

**FINANCIAL ANALYSIS FOR THE MONTH**

MSA performed at 86% of its budgeted expenditure, in line with its expected amount. More expenditures will be expected in December with all the year end transactions coming into place. It is expected that MSA will have a reduction of the budgeted deficit at the end of 2024

MSA Investment is performing well with IRR of 9.87% up until end of November. This is hoping to assist in reducing the organisation deficit.

**INCOME STATEMENT**

1 January - 30 November 2024

	YEAR TO DATE			ANNUAL		
	2023 Actual (\$)	2024 Actual (\$)	Variance (\$)	2024 Budget (\$)	2023 Budget Variance (\$)	2023 Budget (%)
	(a)	(b)	(c) = (b) - (a)	(d)	(e) = (b) - (d)	(f) = (b) / (d)
<b>INCOME</b>						
Contribution	50,812	267,344	216,532	48,600	218,744	550%
Investment	221,741	276,891	55,150	225,000	51,891	123%
MSA Rewards Sales	107,539	122,044	14,505	127,623	-5,579	96%
Advertising & Sponsorship	187,110	185,216	-1,894	165,000	20,216	112%
Sales	523,487	560,636	37,149	790,714	-230,078	71%
Courses Revenue	1,316,863	1,332,163	15,300	1,629,788	-297,625	82%
Fines & Charges	32,050	51,520	19,470	24,850	26,670	207%
Office Supplies	2,390	2,141	-249	1,050	1,091	204%
Activities	7,841	1,550	-6,291	44,500	-42,950	3%
Functions & Productions	152,733	89,679	-63,054	109,500	-19,821	82%
Other Income	88,314	85,756	-2,558	62,644	23,112	137%
<b>TOTAL OPERATING INCOME</b>	<b>2,690,880</b>	<b>2,974,940</b>	<b>284,060</b>	<b>3,229,269</b>	<b>-254,329</b>	<b>92%</b>
<b>EXPENDITURE</b>						
Salaries & On Costs	3,981,542	4,210,409	228,867	4,772,746	-562,337	88%
Building & Maintenance	28,925	22,317	-6,608	32,801	-10,484	68%
Equipment	248,358	265,813	17,455	24,000	241,813	1108%
Software Development & Licence	255,254	210,570	-44,684	220,275	-9,705	96%
Fees & Administrative Charges	140,711	129,046	-11,665	251,647	-122,601	51%
Legal & Consultancy	84,102	99,597	15,495	65,000	34,597	153%
Office Expenses	53,951	45,986	-7,965	88,500	-42,514	52%
Subscriptions	14,108	16,461	2,353	18,100	-1,639	91%
Training & Conference	59,174	49,469	-9,705	64,268	-14,799	77%
Grants & Donations	115,501	153,173	37,672	178,500	-25,327	86%
Projects & Campaigns	236,399	215,491	-20,908	311,426	-95,935	69%
Activities	197,220	197,459	239	253,834	-56,375	78%
Functions & Productions	224,915	178,687	-46,228	246,800	-68,113	72%
Cost of Goods Sold	331,350	304,693	-26,657	354,674	-49,981	86%
Other Expenses	217,683	204,023	-13,660	230,021	-25,998	89%
<b>TOTAL OPERATING EXPENSES</b>	<b>6,189,193</b>	<b>6,303,194</b>	<b>114,001</b>	<b>7,112,592</b>	<b>-809,398</b>	<b>89%</b>
<b>NET OPERATING EXPENDITURE</b>	<b>3,498,313</b>	<b>3,328,254</b>	<b>-170,059</b>	<b>3,883,323</b>	<b>-555,069</b>	<b>86%</b>
<b>OPERATING MARGIN</b>		<b>52.80%</b>		<b>54.60%</b>		

**FINANCIAL STATEMENT BY DEPT**

1 January - 30 November 2024

	YEAR TO DATE			ANNUAL		
	2023 Actual (\$)	2024 Actual (\$)	2022/2023 Variance (\$)	2024 Budget (\$)	2023 Budget Variance (\$)	2023 Budget (%)
	(a)	(b)	(c) = (b) - (a)	(d)	(e) = (b) - (d)	(f) = (b) / (d)
<b>CODE DEPARTMENT/DIVISION</b>						
100 Monash Student Council	1,354,217	1,453,738	99,521	2,079,267	-625,529	70%
110 Education Public	24,276	25,892	1,616	35,019	-9,127	74%
120 Education Academic	27,648	28,743	1,095	41,549	-12,806	69%
130 Women's	28,124	37,227	9,103	44,722	-7,495	83%
140 Welfare	36,603	49,662	13,059	53,722	-4,060	92%
150 Queer	34,440	30,715	-3,725	41,452	-10,737	74%
160 Environment & Social Justice	27,121	27,715	594	32,662	-4,947	85%
170 Indigenous	22,567	23,143	576	36,572	-13,429	63%
180 Disability	22,904	27,737	4,833	34,642	-6,905	80%
190 People of Colour	29,907	25,171	-4,736	38,872	-13,701	65%
200 Activities	54,562	24,142	-30,420	86,107	-61,965	28%
210 Lot's Wife	54,779	56,342	1,563	72,721	-16,379	77%
220 Creative Live Arts	52,419	27,784	-24,635	58,257	-30,473	48%
230 Residential Committee	35,094	33,029	-2,065	42,572	-9,543	78%
250 The Bike Shop	15,186	29,701	14,515	20,141	9,560	147%
300 Wholefoods	55,706	76,682	20,976	6,753	69,929	1136%
350 Sir John's Bar*	58,802	-73,920	-132,722	48,178	-122,098	-153%
400 MTPD*	-69,721	-358,967	-289,246	-143,353	-215,614	250%
500 Host Scheme & Volunteering	168,889	186,122	17,233	262,516	-76,394	71%
520 Student Advocacy & Support	272,667	227,165	-45,502	366,200	-139,035	62%
550 Student Theatre	173,999	187,830	13,831	250,641	-62,811	75%
600 Clubs & Societies	325,295	336,633	11,338	484,940	-148,307	69%
650 MAPS	13,709	15,030	1,321	25,627	-10,597	59%
700 MUISS	57,854	57,195	-659	100,712	-43,517	57%
750 Radio Monash	11,042	3,849	-7,193	16,380	-12,531	23%
800 SURLY	92,297	123,663	31,366	178,252	-54,589	69%
<b>TOTAL OPERATING EXPENSES</b>	<b>2,980,386</b>	<b>2,682,023</b>	<b>-298,363</b>	<b>4,315,123</b>	<b>-1,633,100</b>	<b>62%</b>

\*Denotes MSA Surplus Generating Departments

**PRESIDENT REPORT**

**\*Key Activities**

**Outline key activities completed thus far since last report**

- VCSPAF Submission
- Communicating with Simon Kupec and Allie Clemans
- Liaising with campus security
- Research etc

**Can outline work being done for upcoming events/projects**

- Communicating with NTEU
- Collaborating with activist groups on campus
- Research and comparison with other universities
- VCSPAF submission

**Department Goals**

Goal	Progress (complete/ongoing/incomplete)	Comments
Removal of surge parking on campus	Complete	Have announced to student body
N1 Lift fixed	Complete	Thank you to Charlotte's hard work and contributions.
Reinstating 5-day extensions	Incomplete	Unlikely to change according to DVC Allie Clemans.

24/7 Libraries Open	Complete	Trial is underway!
Opposing the Safer Classrooms Initiatives	In progress	With NTEU
Opposing the new code of conduct	In progress	With NTEU
Fixing campus lighting	In progress	In collaboration with the Womens Department and Residential Department
Air Conditioning in residential buildings	In progress	Want to announce this more clearly on MSA Socials - however students can bring in
Universal Submission Times	In progress	A trial of '4' separate times
Preventing the renewal of Woodside-Monash Energy Partnership	In progress	Taking to VCSPAF and collaborating with activist groups.

**SECRETARY REPORT**

**\*Key Activities**

At MSC 1 and 2 we confirmed all previous minutes from 2024, and these are currently in the process of being published on the MSA website.

The MSC passed a motion to make honorariums public on the MSA website, which has since been placed on the website.

The MSA also has won several wins for students, including the abolition of surge parking, and expanding the Free Travel Pass Program.

The full MSA Schedule has also now been distributed to members.

**Department Goals**

Goal	Progress (complete/ongoing/incomplete)	Comments
Ensure that all meetings, decisions, attendance, and official documents within the MSA are accurately recorded.	All minutes from 2024 have now been completed, and minutes from MSC 1/25 and 2/25 are underway.	
To support MSA campaigns	We are currently working on a number of campaigns, including a broader safety campaign on campus, which includes lighting and safety of residential students. Since last MSC, a ResComm OB and I did a walk through of campus to document locations with unacceptable lighting.	

Fix the N1 Lift	Complete	
Expand the Travel Pass Program	Complete	
Make Honoraria Public for students	Complete	

## CREATIVE & LIVE ARTS (CLA) REPORT

### **\*Key Activities**

#### **Outline key activities completed thus far since last report**

1. Finalised the live music line up for Semester 1 2025 Wednesday Sessions; both external bands and student artists with an emphasis on diverse expression of live arts.
2. Successfully completed Week 1 Wednesday Sessions and had an in-depth debrief for improvements.
3. Planned and sold-out tickets for CLA's first musical excursion in recent years to Beauty and the Beast the Musical at Her Majesty's Theatre.

#### **Can outline work being done for upcoming events/projects**

1. Planning additional offerings for Wednesday Sessions (i.e. soft serves, popcorn, slushies, donuts).
2. Planning Skate the Night Away – one of CLA's most successful events in 2024 – and it's back by popular demand.
3. Ideating on a potential jazz night at the Count's.
4. Ideating on a potential excursion to the 2025 Melbourne Comedy Festival.

## Department Goals

Goal	Progress (complete/ongoing/incomplete)	Comments
Expand the range of CLA events offered	Ongoing	Successfully incorporated musical theatre so far. Some potential new themes include jazz and comedy.
Strengthen partnerships with other MSA departments	Ongoing	Successful examples from 2024 include the Pink Party co-organised with the Women's Dept. and Craft Market co-organised with the Welfare Dept.
Increase student participation in CLA events	Ongoing	Engage students through interactive posts and contests. Reach out to new audiences via social media trends.
Establish a strong volunteer base for CLA	Complete	Effective incentives in the past include an end-of-year volunteer appreciation party and pack down shift pizza.
Develop a preliminary calendar of events	Ongoing	Almost complete for semester 1, 2025. Ensure a balanced mix of large-scale and intimate events to appeal to a wider audience.

**ACTIVITIES REPORT**

**\*Key Activities FATIMA IQBAL & RAAGE NOOR**

**Outline key activities completed thus far since last report**  
OFAD IS DONEEE!! WAS A HUGE SUCCESS.

**Can outline work being done for upcoming events/projects**  
Planning to have a collaborative Iftar with POC & Welfare on the 24<sup>th</sup> of March.  
Food, venue, drinks, and decorations are finalised. Volunteer roster on work

**Department Goals**

Goal	Progress (complete/ongoing/incomplete)	Comments
Have a successful Iftar event with POC and Welfare	ongoing	So far on planning stage.

## Clubs & Societies REPORT

### **\*Key Activities**

#### **Outline key activities completed thus far since last report**

##### **1. O-Week**

O-Week was very successful for C&S with almost all affiliated clubs participating. Total club memberships at the end of O-Week stood at 19,926, an increase of 3,411 compared to 2024 despite a small decrease in MSA+ membership sales.

##### **2. C&S Support Network**

Following initial success in 2024, the C&S Support Network has returned for 2025. The program pairs each club with one of the nine C&S Executive Members who is another direct point of contact for each club for questions and additional support.

C&S Executive members are encouraged to regularly engage with their assigned clubs and provide advice and support as needed. C&S Staff continue to be available to support clubs and meet with club OBs.

Reassignments are made as needed to ensure clubs continue to have a Support Network buddy despite changes in the composition of the C&S Executive.

##### **3. 2025 C&S Grants Manual**

An updated 2025 C&S Grants Manual has been developed by Paul Halliday (C&S Treasurer) in consultation with the C&S Executive and C&S Staff. The 2025 Grants Manual includes clarification of processes, some increases to grant amounts and a simplification of Special Project grants. Updated grant forms will also be released to complement the updated grants manual.

#### **Can outline work being done for upcoming events/projects**

##### **1. Affiliation of New Clubs**

Following the affiliation of 4 new clubs in Semester 2 of 2024, the new clubs application process for Semester 1 of 2025 is currently ongoing with applications having been submitted in Week 1.

Selected applicants will be directed to hold their Inaugural General Meetings following which they will receive initial support from C&S including opening bank accounts, applying for ABNs, an initial grant of \$750 and committee training.

##### **2. 2025 C&S OGM**

The Clubs & Societies Council Ordinary General Meeting will be held at 14:00 on Wednesday 19 March 2025. The primary business of the meeting is to receive reports from the C&S

President and C&S Treasurer and to conduct a by-election for 2 vacant C&S General Representative positions.

### **3. Semester 1 Club General Meetings**

Most clubs are holding their Ordinary General Meetings this Semester with others holding their Annual General Meeting. The C&S Executive is providing assistance including advising clubs, serving as Returning Officers and in rare cases chairing club general meetings.

Returning Officer Training sessions are being run by Jesse Fraser (C&S Secretary). This training equips club office bearers with the skills to act as Returning Officers in their club's elections.

### **4. C&S Standing Orders**

C&S is currently developing standing orders for the conduct of C&S Executive Meetings. Following this C&S will develop Standing Orders for the conduct of C&S General Meetings. It is envisaged that these will eventually serve as the basis for standard Standing Orders for use by clubs.

### **5. C&S Events**

C&S will hold an 'Office-Bearer Appreciation Day' in Week 11 (Volunteer Week). Planning is ongoing for the 2025 C&S Awards Night with a venue confirmed for Semester 2.

## **Department Goals**

<b>Goal</b>	<b>Progress (complete/ongoing/incomplete)</b>	<b>Comments</b>
Update C&S Regulations to be clearer, fit for purpose & align with current standards.	Ongoing	New Finance Regulations and Affiliation Regulations introduced in 2024.  Other Regulations awaiting updates.  C&S Executive looking to establish working groups on amendments to the C&S Constitution.
Social & Non-social events for Office Bearers throughout the year	Ongoing	Events held for club OBs so far this year: <ul style="list-style-type: none"> <li>• Training Day</li> <li>• IWD Event with MSA Womens</li> </ul> Various events planned for club OBs throughout the year including:

		<ul style="list-style-type: none"> <li>● Training Day</li> <li>● 2 OB Appreciation Days</li> <li>● C&amp;S Awards Night</li> <li>● WIPD Event</li> </ul> <p>Planning under way for Semester 1 OB Appreciation Day and C&amp;S Awards Night in Semester 2.</p>
Streamlining and promoting use of C&S Grants Program	Ongoing	<p>New Grants Manual for 2025 approved, to be released to clubs in the near future.</p> <p>New grants manual includes clarification of processes (e.g. adding calculation formulas), some increases to grant amounts and a rework of the Special Project grant category.</p> <p>More grant forms are to be updated this semester, building on progress made to grant processing times last year.</p>
Club Incorporation & ACNC Registration	Ongoing	<p>C&amp;S has been supporting clubs to register with the ACNC due to new ATO requirements.</p> <p>Clubs that have not registered with the ACNC are being supported through the ATO not-for-profit self-review process.</p> <p>Clubs becoming Incorporated Associations is an ongoing project that will continue over the next few years.</p>
C&S Executive Meeting Standing Orders	Ongoing	Drafting Process Ongoing

**MUISS REPORT**

**\*Key Activities**

**Outline key activities completed thus far since last report**  
 Orientation week was successful  
 The First welfare lunch would have been completed by the time of this MSC

**Can outline work being done for upcoming events/projects**  
 Preparation work for future welfare lunch (every fortnight’s Thursday on even weeks) are on track  
 Wrapping up the planning for day trip  
 Planning for the outline and food for multicultural day  
 Planning for a resume and LinkedIn building workshop  
 Planning for exam info session

**Department Goals**

Goal	Progress (complete/ongoing/incomplete)	Comments
to enhance community outreach and visibility informed and connected.	<ul style="list-style-type: none"> <li>- Frequent posting on social media (ongoing)</li> </ul>	<ul style="list-style-type: none"> <li>- We have increased our outreach to more international students via frequent posting on social medias which gained 813 new followers</li> </ul>
to support the well-being of all international students by addressing their needs, providing essential resources, and fostering an inclusive and	<ul style="list-style-type: none"> <li>- Welfare lunch (ongoing)</li> <li>- R U Ok Day (incomplete)</li> </ul>	<ul style="list-style-type: none"> <li>- Adequate Food order from Papa’s Korean Chicken Restaurant which plans to serve about 150 people</li> <li>- All tickets on</li> </ul>

supportive environment.		Eventbrite for the welfare lunch are sold out
to organize inclusive social and culturally diverse events that bring together international students or all students, fostering cross-cultural engagement, and a sense of belonging within the university community.	<ul style="list-style-type: none"> <li>- Multicultural Day (Ongoing)</li> <li>- Day Trip (ongoing)</li> <li>- International Student Ball (Incomplete)</li> <li>- One World Fest (incomplete)</li> </ul>	<ul style="list-style-type: none"> <li>- Planned to have the day trip on week 4, but due to the organiser's personal scheduling issue and study commitments, the day trip have been postponed to week 7, but the plannings are all done</li> <li>- Planning for the multicultural day have started and are on track, where the event is planning to happen on week 8 after the mid-sem break</li> </ul>
to organize informative events designed to assist international students in exploring job opportunities, gaining career insights, and developing the necessary skills to enhance their employability.	<ul style="list-style-type: none"> <li>- Exam info-session (ongoing)</li> <li>- Resume and LinkedIn profile building workshop (ongoing)</li> </ul>	<ul style="list-style-type: none"> <li>- Initially planned to have an industry night or networking night, but due to unavailability of companies that are willing to hire international students, this event has been cancelled</li> <li>- To accommodate the cancelling of having the industry night, we decided to have a resume and LinkedIn profile building workshop instead to assist international students with their employability, planning have just started. Grace from SRSU helped us reach out to career connect, however, career connect is currently undergoing</li> </ul>

		some internal restructure and won't be able to partner for any events anytime soon. – finding for alternatives.
--	--	---

## RADIO MONASH REPORT

### \*Key Activities

#### Outline key activities completed thus far since last report:

- God what didn't we do....

-Orientation week:

Radio Monash ran the O-Week stage this year as we normally do. With more than 18 artists across Monday – Friday, we ran the stage! We featured all students artists, who were paid a standard wage with the help of our SkyMusic sponsorship. Not only did we get feedback that the lineup was great, we had a wonderful turnout of people that participated in the audience. With the addition of the new umbrellas, despite the heat, many students new and returning sat down and supported the artists. We had great feedback from our performers and the audience. We changed to a 20 minute change over instead of a 10 minute one, and this had substantially helped us with sound checks. We had over 12 committee members on site at all times each day. We had multiple MC's across the week, giving students the opportunity to gain public speaking skills.

- Welcomed over 32+ clubs on stage to give talks about their club and how students can get involved in said clubs.

- Recorded over 40+ videos of clubs, OB departments, our paper rivals lot's wife, sport clubs and student teams. These videos were posted all across social media gaining large viewership across MSA, Monash Sport, C&S and Radmon socials. The interviewers were myself, Chris, & Denny. It was a huge undertaking, but we hope we gave more opportunities to clubs to promote themselves.

-Hosted our own Radio Monash stall at orientation week, arm wrestled people (we won so much stuff), gave away stickers, guitar picks, pins and more. We had a record number of new members sign up to the station.

-OPEN NIGHT. Our first event of the year, open night gave students the opportunity to see all departments of radio monash. We had an insane (almost over capacity turnout) of 65 people (up by 25 from last year), selling out 100 tickets for a free event. This event ran through Recording studio, how to run a show, how to use the space to run a show, journalism, marketing, inducting, training students how to use and get involved in the space.

- Show applications: we have also had many, many show applications. So far over 26 shows have applied and they haven't closed yet. They will close Friday the 14<sup>th</sup>.

-Published 4 articles on our website.

-Made progress on our after hours access requests with Lowan.

-WHOLEFOODS: radmon and wholefoods have come together to bring live student gigs every week. Whilst we can't pay the artists normal rates, we have scraped together what we can to offer them a thank you for their time. Each week our team, 2 student artists perform an acoustic gig free to all students. This is an event for students, but also a great chance for student artists to gain gigging experience for the first time, so they can then go on to larger

gigs. This has been very important to keeping campus culture alive, and through our studio training program, our team gets to learn valuable live skills for future jobs.

- Getting rid, organising and archiving scary mouldy records after the pre sem storm. Long story short: mould sucks.
- Our email went down for 3 days as we sent too many emails and almost lost everything. But it's fine now it just took a trip to Tal to fix it. But if that happens again, we are in big trouble as we only get 2 warnings.

**Can outline work being done for upcoming events/projects**

- The next event we will run that isn't our OGM is Band Match Making. This sold out last time 3 times, and allows students to meet band mates. We made 4 bands and 3 romantic couples so that's a win.
- Next event is Vibe Night, standard open mic night that will happen at sir johns bar.
- Off campus gig. This will happen in the later half of the semester.
- Trivia night/karaoke.
- Computer situation: Because campus centre gets so hot, our cooler fluid leaked in our broadcast computer, and now we have to fix that pronto or the station is down.
- Getting insulation for the recording studio. The sound proofing is bad, just step inside for 2 mins and you'll hear itttttt.
- Gaining longer after hours access on weekdays and weekends for our recording studio so we can stop getting noise complaints, do maintenance and let student artists record uninterrupted.
- Archive all of the mouldy records.
- Start archiving everything for Sioban, because student history.
- Roast lot's wife more on social media.
- Collaborate with Honi Soit for the student media conference 2025.

**Department Goals**

Goal	Progress (complete/ongoing/incomplete)	Comments
Increase our listenership base	Ongoing	We are getting there, but it is the start of semester. We have many more new shows that have joined, so it will likely increase soon, but we are trying to broadcast it

		more on campus which is proving to be a challenge.
Reliable Server	Incomplete	After many of our tech people have got big people jobs, they don't have as much time to deploy a server. We are looking into other options, including gaining our ACNC to access an Azure cloud server by Microsoft. A meeting will be held soon In regards to this.
Publish over 35+ articles a semester, highlighting student journalism	Ongoing	We have published 4 so far. But we are looking for a new Journalism Director, so this will impact our timeline, but our goal is still doable.
Record Multiple Albums and singles in the recording studio	Ongoing	Too early in the sem, but people are booking the space.
More opportunities for student artists	Ongoing/complete	Wholefoods, O week, it's happening people.
Offer Radio and Podcasting opportunities	Ongoing	After o week, we have had plenty of show applications, and we continue to offer our services, but our computers keep going bye bye. So it's ongoing.
Creating a welcoming and inclusive space	Ongoing/complete	Our committee is the most diverse at MSA, and we continue to offer a welcoming space to LGBTQIA+, disabled, POC, women and more.

Killer gigs and events	Ongoing	We are cooking on this as I type. But open night sold out, and O week did very well. We expect this for the rest of our events that we have outlined above.
Live to air	Incomplete	This is a lot of work, and the tech we have isn't ready yet, but it is coming along.